

宝润达保温装饰一体板

中国首家整体方案解决供应商



# ABOUT US

## 关于我们

在过去的21年，宝润达致力于打造高品质的产品，提供建筑内、外饰面的解决方案，向客户提供优质、安全、环保的建筑材料解决方案，从产品、设计、技术、销售、施工等全方位满足您的需求。我们的团队不断以提高标准要求自己，我们以打造品质一流、效益一流、管理一流的现代化企业为目标，致力于新型节能产品的开发，拥有独立自主生产技术知识产权专利，引进德国技术采用进口主材，秉承“致力于成为受尊敬和具有可持续发展能力的企业”为企业愿景，坚持“以工业品创新和流通促进社会资源的集约利用”为企业使命，不断开拓创新，推动建筑装饰行业向绿色、低碳、健康、环保、节能的方向发展。

In the past 21 years, BRD committed is to creating high-quality products, internal, external finishes of solutions, to provide customers with high quality, safe, environmentally friendly building materials solutions, to meet all your needs from product design, technology, sales and construction. Our team continues to improve the standards themselves, and we have to build a first-class quality, first-class benefits, first-class modern enterprise management as the goal, We are committed to the development of new energy-saving products, with independent intellectual property patents production technology, the introduction of German technology imported main material adhering to the "committed to being respected and have capacity for sustainable development of enterprises" for enterprise vision, Adhere to the "promotion of industrial innovation and circulation of the intensive use of social resources" for enterprise mission, continuous innovation, promote the building decoration industry to a green, low carbon, health, environmental protection, energy saving direction

宝润达保温装饰一体板

中国首家整体方案解决供应商



# PRESENTATION BY BOARD CHAIRMAN

## 董事长致辞

宝润达力图走在时代前沿，求新、求变、求发展是我们的行事方式。我们要求员工不要因循守旧，不要一成不变，要在发展中不断创造，在创造中不断发展。同时，求变只是手段，不是目标，有些亘古的道德规律我们必须遵守，如：诚信、勤奋、守序、服从……

BRD is trying to walk in the forefront of the times, Innovation, change, and development are our way of doing things. We ask employees not to follow the permanent track, not static, to continue to create in the development, in the creation of continuous development. At the same time, change is only a tool, not a goal, some eternal moral laws we must abide by, such as: honesty, diligence, lawful, subject...

一直以来，我们胸怀愿景，肩负使命，用心做好产品、服务、管理、运营等方方面面，用行动赢得客户和营销伙伴的尊敬。我相信每一位宝润达家人，在和公司共同成长的过程中，已经感受到了我们所倡导的和谐人生文化的真谛。但我们所要做的不仅仅是这些，我希望，我们能把和谐人生与更多的人分享，把企业创造的价值和社会分享。

All along, we mind a vision, and mission, to provide good intentions, products, services, management, operations and other aspects, with action to win the respect of customers and marketing partners. I believe that every BRD family in company growing process, has felt the harmony of life the true meaning of culture we are advocating. But we have to do more than that, I hope that we can share harmonious life with more people, the enterprise value creation and social sharing, and share the enterprise value with social.



# CONTENTS

## 目录

一、产品	02
1 仿石材保温装饰一体板系统	03
Imitation Stone Insulation Decorative Integrative Panel System	
1.1 真石漆保温装饰一体板系统	04
Real Stone Coating Insulation Decorative Integrative Panel System	
1.2 宝润达水包水（水包砂）保温装饰一体板系统	11
BRD Water in Water (Sand in Water) Insulation Decorative Integrative Panel System	
1.3 宝润达转印仿石材饰面一体板系统	19
BRD UV Coating Imitation Stone Integrative Panel	
2 石材保温装饰一体板系统（含瓷砖仿石）	25
Real Stone Insulation Decorative Panel System (Including Ceramic Tile and Imitation Stone)	
3 氟碳饰面保温装饰一体板系统	33
PVDF Coating Insulation Decorative Integrative Panel System	
二、设计 Design	40
三、施工 Installation	58
四、系统 System	64
五、作品 Projects	68
六、结语 Conclusion	83

宝润达保温装饰一体板

中国首家整体方案解决供应商



## 值得信赖 De 产品

宝润达做为外立面仿石系统领先的供应商，不只拥有行业最新先进制造工艺，更拥有很多的成功案例，同样的仿石材一体板，选择宝润达您将获得最成熟、最具性价比的系统化解决方案。

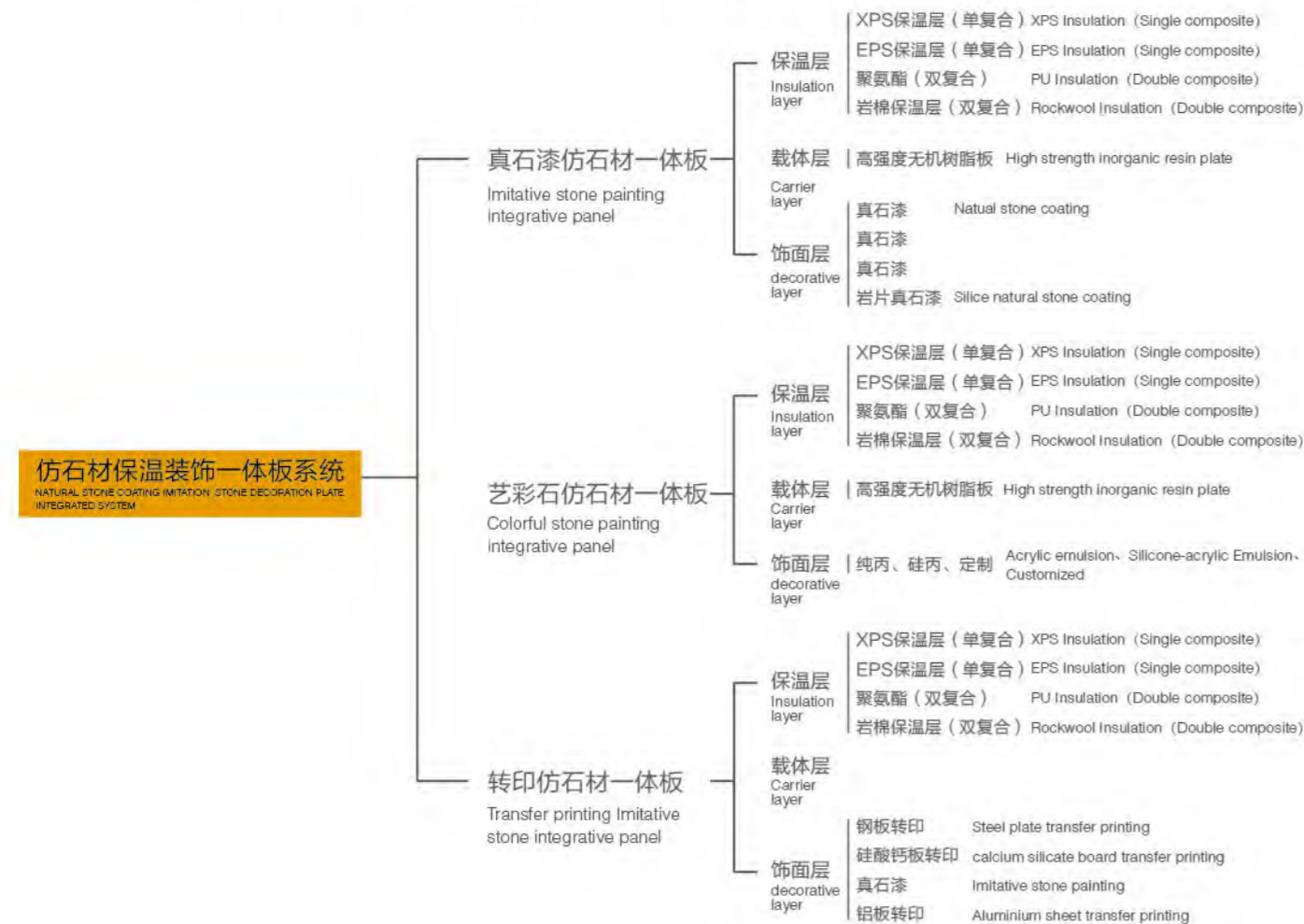
BRD as the leading supplier of exterior wall imitation stone system not only have the most advanced technology, but also have a lot of successful projects. BRD will provide you the most mature and high cost performance systematic solution

# NATURAL STONE COATING IMITATION STONE DECORATION PLATE INTEGRATED SYSTEM

## 一、仿石材保温装饰一体板系统

宝润达作为建筑外立面仿石系统领先的供应商，不仅拥有行业最先进制造工艺，更拥有很多的成功案例，同样的仿石材饰面一体板；选择宝润达，您将获得最成熟、最具性价比的系统化解决方案。

BRD as the leading supplier of exterior wall imitation stone system not only have the most advanced technology, but also have a lot of successful projects. BRD will provide you the most mature and high cost performance systematic solutions comparing with other suppliers.



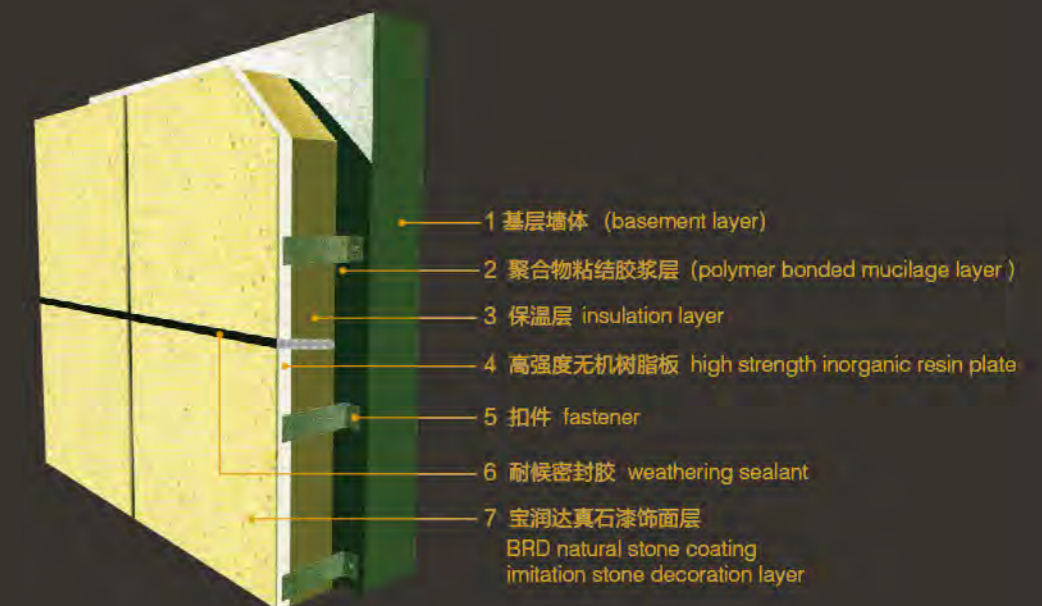
序号 Number	保温板材料名称 Insulation	外观色泽 External color	表观密度 (kg/m³) Appearance density (kg/m³)	压缩强度 (Mpa) compressive strength (Mpa)	尺寸稳定性 dimensional stability	导热系数 w/(m.k) Thermal conductivity w/(m.k)	燃烧性能 Flammability	水蒸气透过系数 (ng/pa.m.s) Water vapor permeability (ng/pa.m.s)
1	挤塑板 XPS	浅蓝色 light blue	浅蓝色 light blue	28.0-35.0	≤1.20	≤0.03	B1级	≤3.0
2	聚氨酯 PU	白色 white	白色 white	22.0-25.0	≤0.30	≤0.039	B1级	≤3.0
3	真金板 TPS	白色 white	白色 white	30.0-32.0	≤0.30	≤0.036	B1级	≤3.0
4	岩 棉 Rockwool	暗黄色 Dark yellow	暗黄色 Dark yellow	≥0.150		≤0.048	AA级	≤3.0

- 针对仿石材一体板系统，宝润达可以提供经济、中档、高档的解决方案。
- 宝润达只根据项目具体情况及您的需求，只向您提供最对、最合适的产品方案，而非最低价或最贵。
- 具体产品组成原材料的规格及参数，会在整体性方案里详细体现
- Imitation stone Integrative panel system, BRD can provide economic, mid-range, high-end solutions
- BRD only provide you the optimum project, not the most cheapest and expensive project according to exact conditions and requirements.
- The raw materials specifications and Parameters will be embodied in the integrative solution.

# NATURAL STONE COATING IMITATION DECORATION PLATE INTEGRATED SYSTEM

## (一)、真石漆仿石材保温装饰一体板系统

- 真石漆仿石材保温装饰一体板系统
- 系统组成：饰面层+面板骨架层+保温芯材层
- 饰面层：宝润达真石漆仿石材饰面
- 面板骨架层：宝润达高强度无机树脂板
- 保温芯材层：岩棉、聚氨酯、XPS
- Natural stone coating imitation stone decoration plate integrated system
- System composition: surface layer frame + panel casing layer+insulating material
- Surface layer frame: BRD Natural stone coating imitation stone decoration layer
- Panel casing layer: treasure, high-strength inorganic resin plate
- Insulating material: rock wool, polyurethane, XPS)



## NATURAL STONE COATING IMITATION STONE DECORATION PLATE INTEGRATED SYSTEM FEATURES

### 真石漆保温装饰一体板系统特点

#### 1、装饰性强

95%高仿石，无色差，立体感强，有质感，完全媲美天然石材，彰显建筑顶尖品质。

#### 2、安全性高

宝润达一体板从材料安全、结构安全、防火安全、锚固安全四个方面全方位打造安全保障措施，消除建筑安全隐患。

#### 3、自洁性好

涂层防污性能好，灰尘污物难以附着，可清洗，自洁性好，不会影响装饰效果。

#### 4、使用寿命长

优质的原材料，科学的生产工艺，确保产品拥有25年以上装饰寿命。

#### 5、性价比强

仿石效果逼真，提升楼盘品味，价格远远低于石材幕墙的价格，性价比非常高。

#### 6、保温隔热性好

宝润达一体板具有卓越的保温隔热性能，导热系数低而稳定，不受温度、湿度的变化而影响，使整个建筑物拥有恒温效果。

#### 7、安装便捷

与传统铝板、幕墙等相比，宝润达一体板自重轻，安装简单快捷。

#### 1、ADORNMENT SEX IS STRONG

95% high imitation stone, no color difference, stereo sense is strong, have qualitative feeling, fully comparable to natural stone material, building top quality.

#### 2、HIGH SAFETY

Treasure, one plate from material safety, structural safety, fire safety, anchoring safety four aspects security measures, eliminate construction safety hidden trouble.

#### 3、GOOD SELF-CLEANING

Antifouling coating performance is good, the dust dirt adhesion, can be clean, good self-cleaning, will not affect adornment effect.

#### 4、LONG SERVICE LIFE

The high quality raw materials, scientific production technology, to ensure the products with more than 25 years life.

#### 5、STRONG COST PERFORMANCE

Lifelike stone effect, the promotion building dish tastes, the price is much lower than the price of stone curtain wall, the price is very high.

#### 6、GOOD INSULATION

Company's board has excellent thermal insulation properties of an organic whole, low thermal conductivity and stability, are not affected by the changes of temperature, humidity, make the whole building with constant temperature effect.

#### 7、INSTALLATION IS CONVENIENT

Compared with the traditional aluminum plate, curtain wall, etc, the treasure, one version of the light weight, simple and easy to install.

## SPECIFICATION 技术参数

检验项目 Inspection Item	实测值 Measured value
检验项目单位面积质量, kg/m <sup>2</sup> Quality per sq.M, kg/m <sup>2</sup>	<20
颜色及外观 Color and appearance	颜色均匀一致, 符合标准要求, 外观整齐、平直、无污染、无破损 Uniform color, conforming the standard, net appearance: flat, pollution free, no damage.
抗冲击性 Impact resilience	10J冲击合格 10J Qualifying impact
耐冻融性 Freeze-thaw resistance	表面无裂纹、空鼓、起泡、剥离现象 No flaw, hollow, bubble, and exfoliation phenomenon
不透水性 Watertightness	试样防护层内测无水渗透 No water seepage
吸水量, g/m <sup>2</sup> Water Absorption, g/m <sup>2</sup>	100
燃烧性能 Flammability	燃烧性能B1级(芯材)、A级(复合) B1Grade (core material)、A级 (composite)
XPS保温板导热系数W/(m.k) XPS Insulation panel thermal conductivity W/(m.k)	≤0.030
抗拉强度 Tensile strength	原强度, MPa, 0.032 浸水后, MPa, 0.27 冻融后, MPa, 0.26 热老化后, MPa, 0.31 Original strength, MPa, 0.032 After water immersion, MPa, 0.27 After freeze thawing, MPa, 0.26 After thermo senescence, MPa, 0.31
系统耐候性(80次“高温淋水”循环和20次“加热-冷冻”循环) System weatherability (80times of circulating high temperature water drenching and 20 times of circulating heating and freezing)	耐候性实验后, 饰面层未发现裂纹、空鼓、起泡、粉化、剥落等破坏; 耐候性试验后, 饰面层与保温层的拉伸粘结强度为0.26MPa, 饰面抗冲击性为10J级。 After weatherability test, no flaw, hollow, bubble, and exfoliation phenomenon.; the tensile strength between decoration layer and insulation layer is 0.26MPa, the impact strength of decoration layer is 10J grade.



BRDYTB-Z001



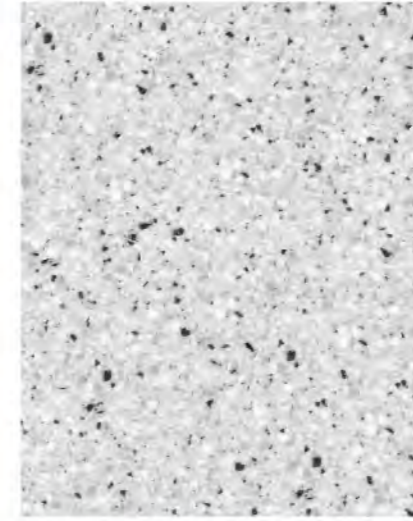
BRDYTB-Z002



BRDYTB-Z003



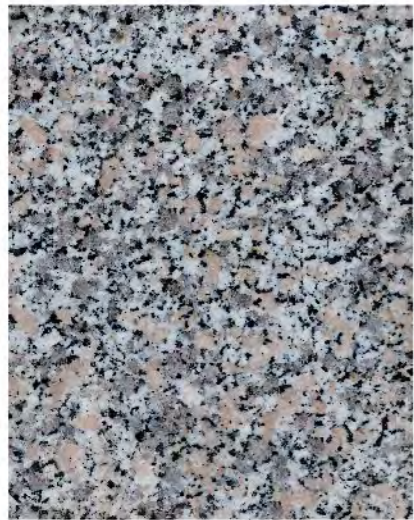
BRDYTB-Z010



BRDYTB-Z011



BRDYTB-Z012



BRDYTB-Z004



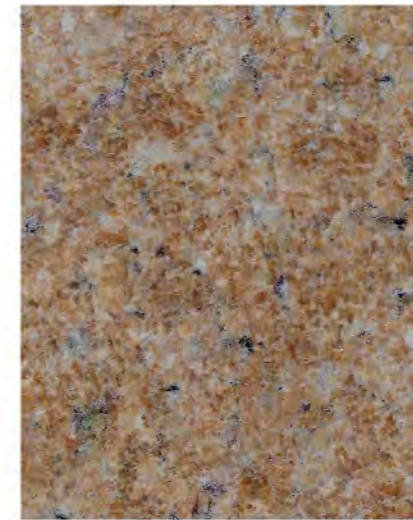
BRDYTB-Z005



BRDYTB-Z006



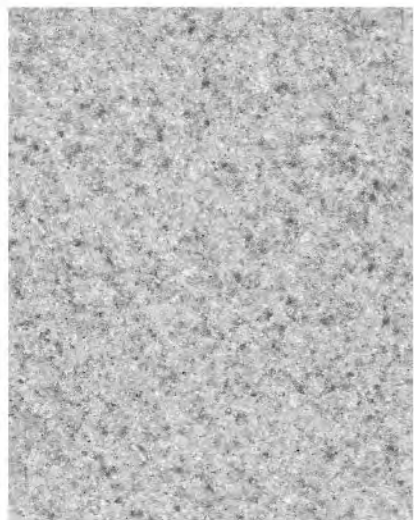
BRDYTB-Z013



BRDYTB-Z014



BRDYTB-Z015



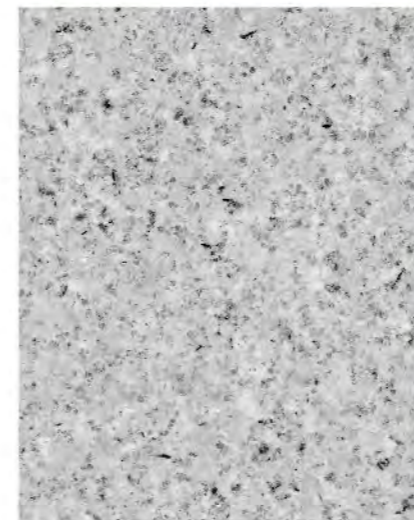
BRDYTB-Z007



BRDYTB-Z008



BRDYTB-Z009



BRDYTB-Z016



BRDYTB-Z017



BRDYTB-Z018



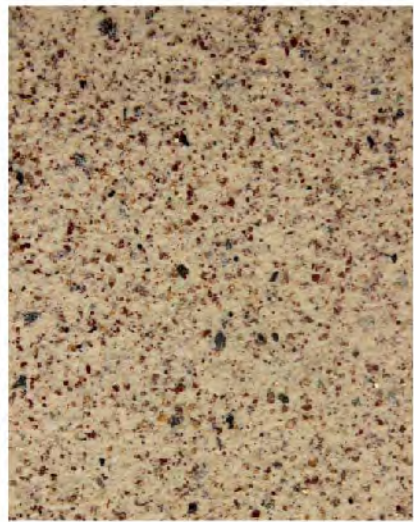
BRDYTB-Z019



BRDYTB-Z020



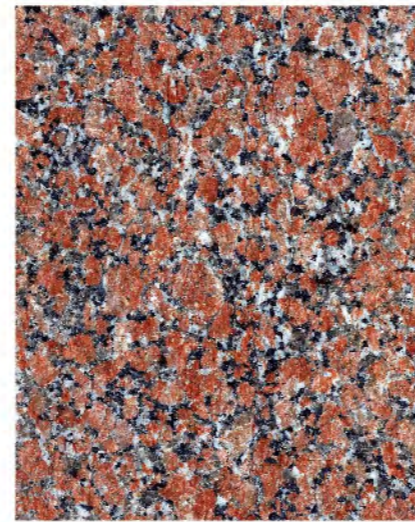
BRDYTB-Z021



BRDYTB-Z022



BRDYTB-Z023



BRDYTB-Z024



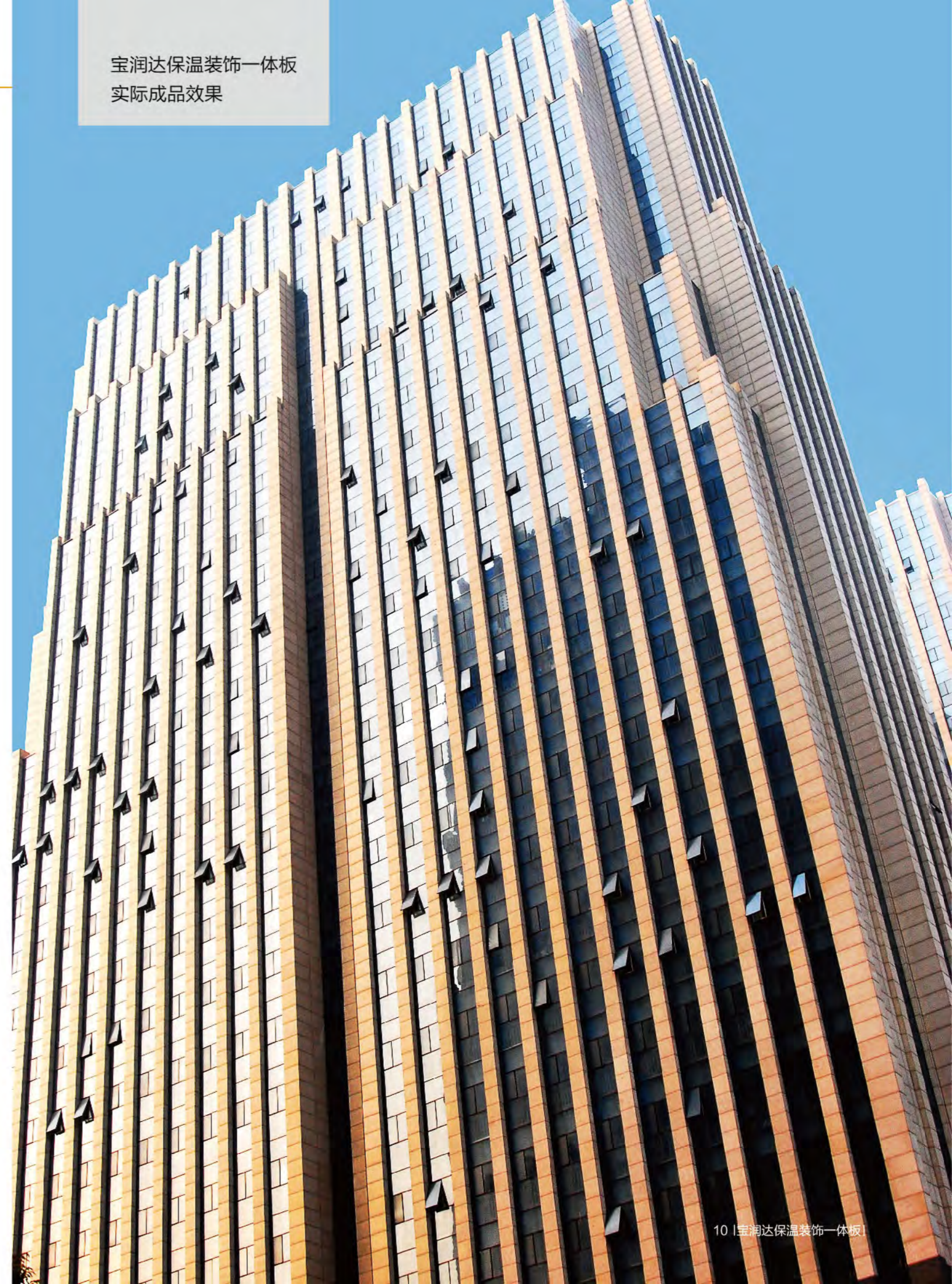
BRDYTB-Z025



BRDYTB-Z026



BRDYTB-Z027





## BRD WATER IN WATER INSULATION DECORATIVE INTEGRATIVE PANEL SYSTEM

### (二)、宝润达水包水保温装饰一体板系统

#### 宝润达水包水

水包水多彩涂料，采用氟硅合成树脂制成多色、多项离子，通过阳离子保护胶体对阴离子的液态石纹颗粒进行粒子包裹和保护的高端技术，使剪切后的彩色颗粒彻底相融合，并能同时将多种颜色包裹成胶状的水性彩色颗粒均匀稳定的悬浮在水性乳液中，最终形成性能稳定、颗粒大小随意的液态共聚物。

#### 卓越表现

- **豪华大气**  
仿真度高达95%，涂层表面凹凸柔顺，色彩相互渗透，可创造出天然石材的花纹和色彩，达到以假乱真的仿石效果。
- **抗裂性好**  
具有很好的延展性，可以遮盖墙面细小裂纹。
- **硬度极好**  
采用先进的核壳技术，图层硬度高，抗冲击性佳。
- **耐候性强**  
可适合不同的气候环境，品质稳定有保障。
- **抗污性好**  
表面光洁，自洁性好，90%污物难以附着。
- **环保安全**  
采用独特包裹技术使其完全水性化，环保无毒。
- **快捷高效：**  
一次喷涂成型，施工简单、工期短。
- **使用年限**  
采用高档氟硅耐候树脂，使用寿命长达25年以上。

#### 适用范围：

适用于各种豪华高档场所，新建、改造各种建筑物之内墙、外墙。如写字楼、酒店、别墅、银行、医院、政府大楼、各种装饰板、外墙外保温材料装饰、特殊造型装饰柱等。

#### Application:

It is widely used on the exterior and interior wall of luxury and upscale building, new building. Such as office building, hotel, villa, bank, hospital, government building, etc.

#### BRD COLORFUL STONE

Colorful stones water in water paint; It uses fluorine silicon synthetic resin multicolor and many ions. The colloid particles are protected by cation and the liquid marbled anion particles also wrapped with the high technology, so that the colorful particles will be blended completely after shearing. The variety of colors are wrapped into aqueous colloidal stably. Eventually it will be combined into durable liquid copolymer in various size.

#### EXCELLENT PERFORMANCE

- **LUXURY**  
more than 95% performance, smooth coating, various colors, mix the spurious stone with the natural stone.
- **CRACK RESISTANCE**  
Excellent extensibility, covering the tiny seam.
- **EXCELLENT HARDNESS**  
Using advanced core-shell technology, high layer hardness, good impact resistance.
- **GOOD WEATHERABILITY**  
It is suitable for different climatic environment, and the quality and stability is guaranteed.
- **STAIN RESISTANCE**  
Smooth surface, self-cleaning, more than 90% dirt can't be adhered.
- **ENVIRONMENTAL PROTECTING**  
Unique package technology to completely water-based, nontoxic.
- **FAST AND HIGH EFFICIENCY**  
one time spray molding, easy installation, short construction period.
- **SERVICE LIFE**  
Using high-grade weather fluorine resin silicone; service life more than 25 years.

## BRD SAND IN WATER INSULATION DECORATIVE INTEGRATIVE PANEL SYSTEM

### (二)、宝润达水包砂保温装饰一体板系统

#### 宝润达水包砂

水包砂源于水包水造粒技术，采用天然彩砂，保护胶造粒。涂层呈砂壁状效果，质感强烈，轻易营造出天然石材之大气效果。一枪多彩，涂布量低，为市面上全新的一款液态花岗岩涂料

#### BRD SAND IN WATER

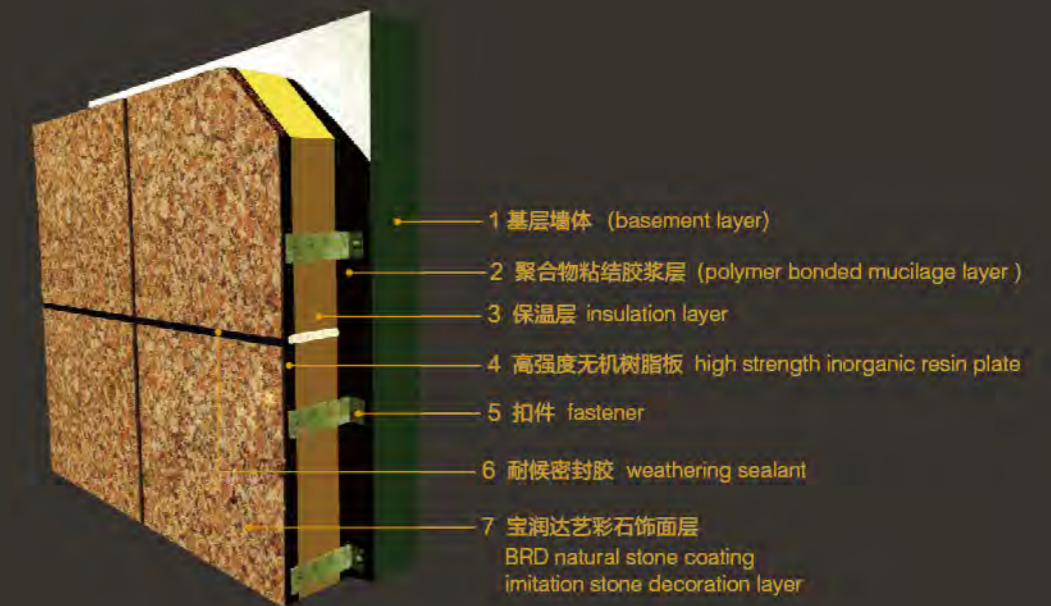
The source of sand in water is from water in water. It choose natural colorful sand and protective glue as raw materials. The surface effect is sand texture with sense of reality. It is easy to create effects of natural stone. Colorful shot, low coating amount, It is a new liquid granite paint.

#### 适用范围：

住宅小区、别墅社区、旧墙翻新、星级酒店、办公大楼、各种装饰板、内外墙装修等。

#### Application:

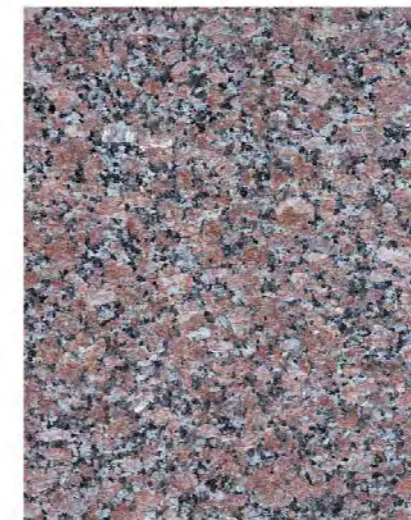
Residential area, villa communities, renovation of old building, hotel, office building, all kind of decorative panel, interior and exterior decoration, etc.



## SPECIFICATION

### 技术参数

检验项目 Inspection Item	实测值 Measured value
检验项目单位面积质量, kg/m <sup>2</sup>	< 20
颜色及外观 Color and appearance	颜色均匀一致, 符合标准要求, 外观整齐、平直、无污染、无破损 Uniform color, conforming the standard, net appearance, flat, pollution free, no damage.
抗冲击性 Impact resilience	10J冲击合格 10J Qualifying impact
耐冻融性 Freeze-thaw resistance	表面无裂纹、空鼓、起泡、剥离现象 No flaw, hollow, bubble, and exfoliation phenomenon
不透水性 Watertightness	试样防护层内测无水渗透 No water seepage
吸水量, g/m <sup>2</sup> Water Absorption, g/m <sup>2</sup>	100
燃烧性能 Flammability	燃烧性能B1级(芯材)、A级(复合) B1Grade (core material)、A级 (composite)
XPS保温板导热系数W/(m.k) XPS Insulation panel thermal conductivity W/(m.k)	≤0.030
抗拉强度 Tensile strength	原强度, MPa, 0.032 浸水后, MPa, 0.27 冻融后, MPa, 0.26 热老化后, MPa, 0.31 Original strength, MPa, 0.032 After water immersion, MPa, 0.27 After freeze thawing, MPa, 0.26 After thermo senescence, MPa, 0.31
系统耐候性(80次“高温淋水”循环和20次“加热-冷冻”循环) System weatherability (80 times of circulating high temperature water drenching and 20 times of circulating heating and freezing)	耐候性实验后, 饰面层未发现裂纹、空鼓、起泡、粉化、剥落等破坏; 耐候性试验后, 饰面层与保温层的拉伸粘结强度为0.26MPa, 饰面抗冲击性为10J级。 After weatherability test, no flaw, hollow, bubble, and exfoliation phenomenon.; the tensile strength between decoration layer and insulation layer is 0.26MPa, the impact strength of decoration layer is 10J grade.



BRDYTB-S001



BRDYTB-S002



BRDYTB-S003



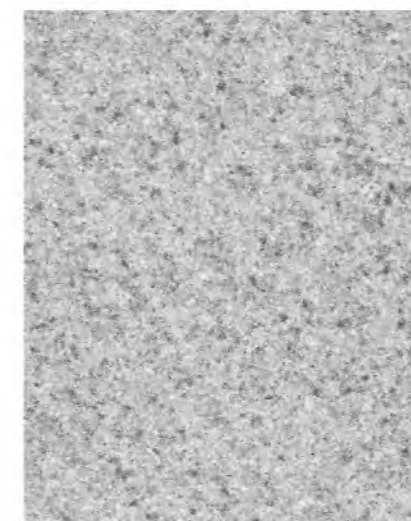
BRDYTB-S004



BRDYTB-S005



BRDYTB-S006



BRDYTB-S007



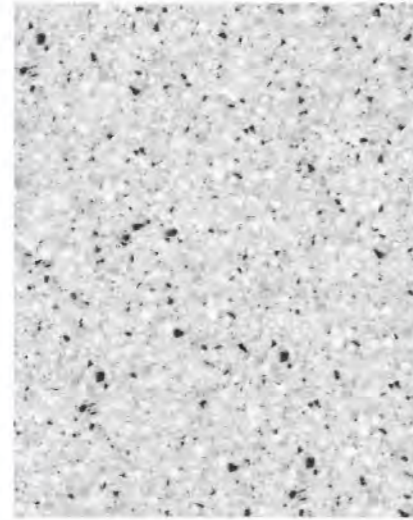
BRDYTB-S008



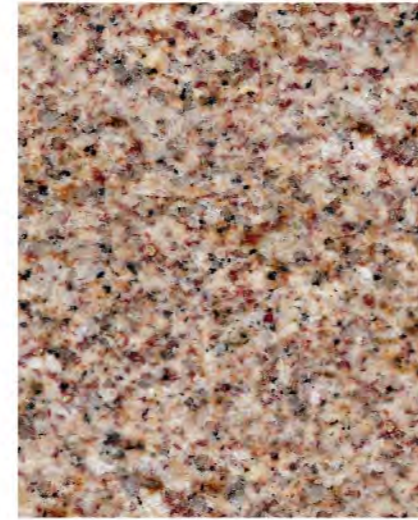
BRDYTB-S009



BRDYTB-S010



BRDYTB-S011



BRDYTB-S012



BRDYTB-S019



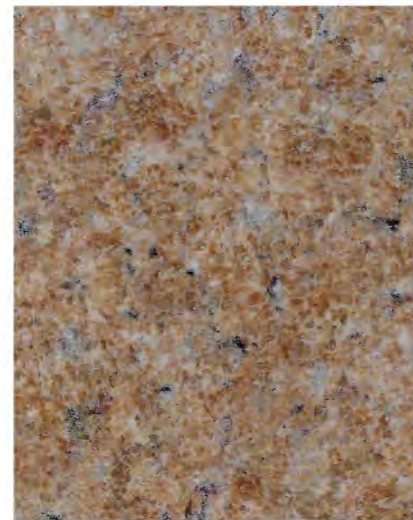
BRDYTB-S020



BRDYTB-S021



BRDYTB-S013



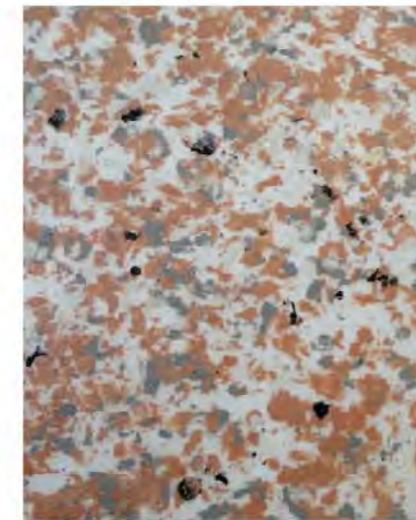
BRDYTB-S014



BRDYTB-S015



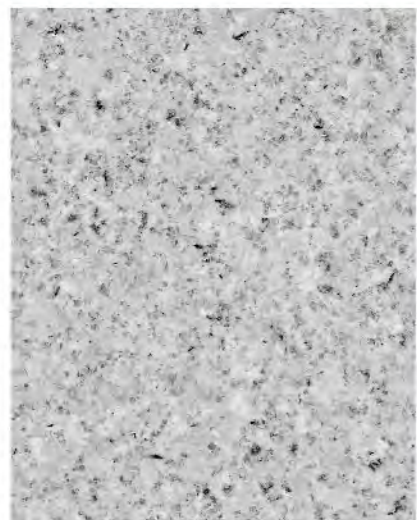
BRDYTB-S022



BRDYTB-S023



BRDYTB-S024



BRDYTB-S016



BRDYTB-S017



BRDYTB-S018



BRDYTB-S025



BRDYTB-S026



BRDYTB-S027

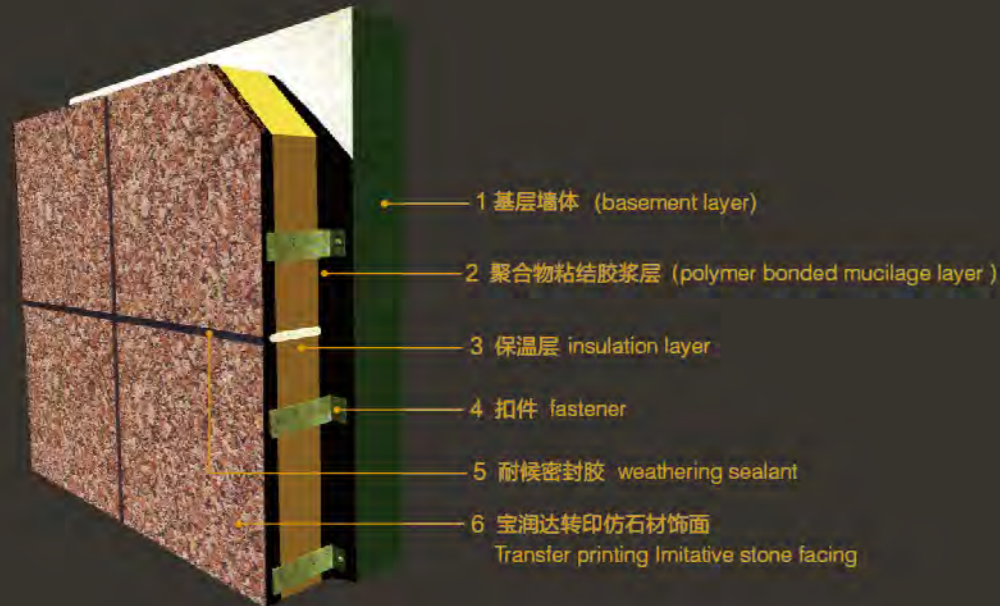
宝润达保温装饰一体板  
实际成品效果



## TRANSFER PRINTING IMITATIVE STONE INTEGRATIVE PANEL SYSTEM

### (三)、转印仿石材装饰一体板系统

- 系统组成：饰面层+保温芯材层
- 饰面层：宝润达转印仿石材饰面  
(基材包括钢板、铝板、硅钙板)
- 面板骨架层：宝润达高强度无机树脂板
- 保温芯材层：岩棉、聚氨酯，EPX、XPS
- System composition: Decorative layer + Insulation layer
- Decorative layer: Transfer printing Imitative stone coating  
(including steel, aluminum, calcium silicate board)
- Base board: BRD high strength inorganic resin plate
- Insulation layer: Rockwool, PU, EPS, EPS



## SPECIFICATION 技术参数

检验项目 Inspection Item	实测值 Measured value
检验项目单位面积质量, kg/m <sup>2</sup>	< 20
颜色及外观 Color and appearance	颜色均匀一致, 符合标准要求, 外观整齐、平直、无污染、无破损 Uniform color, conforming the standard, net appearance, flat, pollution free, no damage.
抗冲击性 Impact resilience	10J冲击合格 10J Qualifying impact
耐冻融性 Freeze-thaw resistance	表面无裂纹、空鼓、起泡、剥离现象 No flaw, hollow, bubble, and exfoliation phenomenon
不透水性 Watertightness	试样防护层内测无水渗透 No water seepage
吸水量, g/m <sup>2</sup> Water Absorption, g/m <sup>2</sup>	100
燃烧性能 Flammability	燃烧性能B1级(芯材)、A级(复合) B1Grade (core material)、A级 (composite)
XPS保温板导热系数W/(m.k) XPS Insulation panel thermal conductivity W/(m.k)	≤0.030
抗拉强度 Tensile strength	原强度, MPa, 0.032 浸水后, MPa, 0.27 冻融后, MPa, 0.26 热老化后, MPa, 0.31 Original strength, MPa, 0.032 After water immersion, MPa, 0.27 After freeze thawing, MPa, 0.26 After thermo senescence, MPa, 0.31
系统耐候性(80次“高温淋水”循环和20次“加热-冷冻”循环) System weatherability (80 times of circulating high temperature water drenching and 20 times of circulating heating and freezing)	耐候性实验后, 饰面层未发现裂纹、空鼓、起泡、粉化、剥落等破坏; 耐候性试验后, 饰面层与保温层的拉伸粘结强度为0.26MPa, 饰面抗冲击性为10J级。 After weatherability test, no flaw, hollow, bubble, and exfoliation phenomenon; the tensile strength between decoration layer and insulation layer is 0.26MPa, the impact strength of decoration layer is 10J grade.



BRDYTB-ZY001



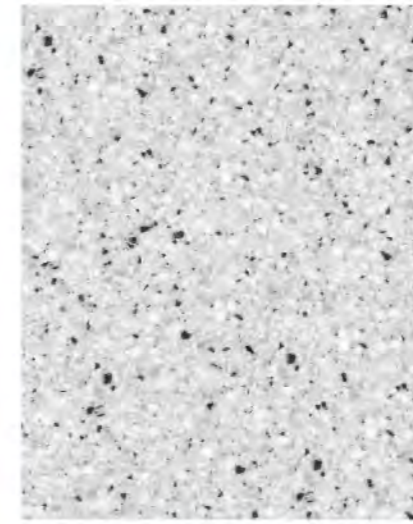
BRDYTB-ZY002



BRDYTB-ZY003



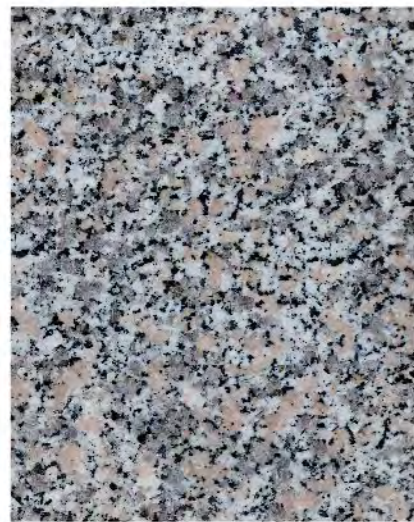
BRDYTB-ZY010



BRDYTB-ZY011



BRDYTB-ZY012



BRDYTB-ZY004



BRDYTB-ZY005



BRDYTB-ZY006



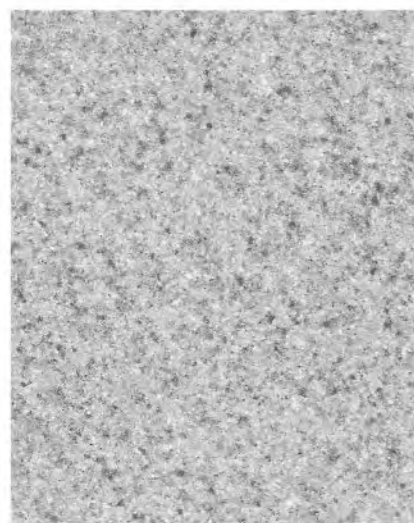
BRDYTB-ZY013



BRDYTB-ZY014



BRDYTB-ZY015



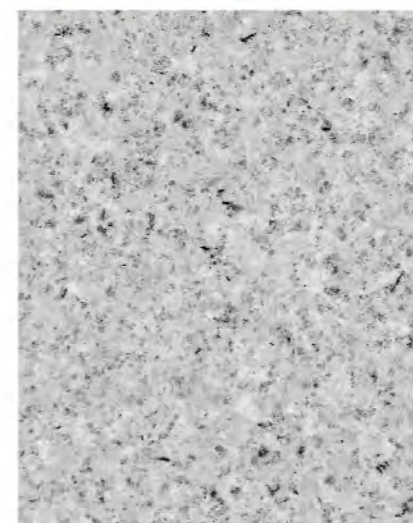
BRDYTB-ZY007



BRDYTB-ZY008



BRDYTB-ZY009



BRDYTB-ZY016



BRDYTB-ZY017



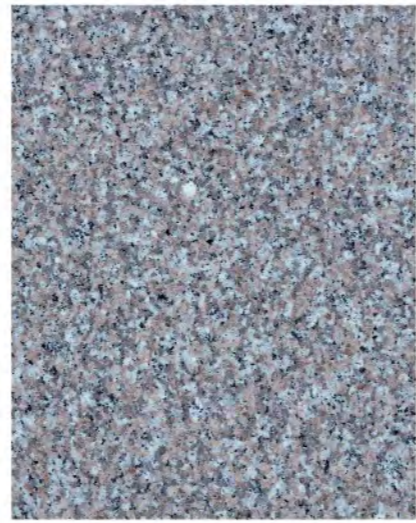
BRDYTB-ZY018



BRDYTB-ZY019



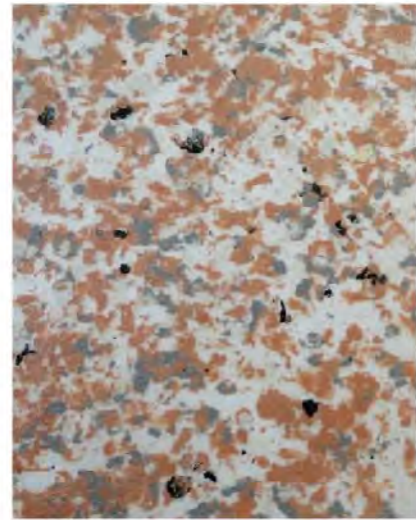
BRDYTB-ZY020



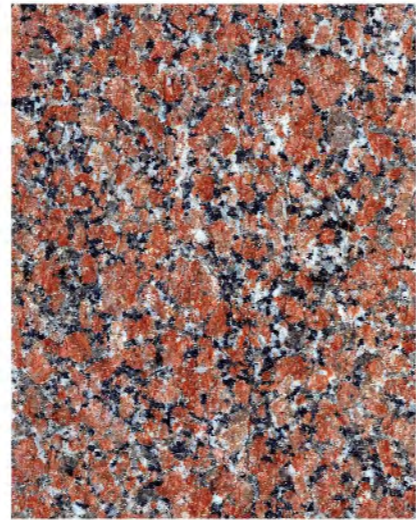
BRDYTB-ZY021



BRDYTB-ZY022



BRDYTB-ZY023



BRDYTB-ZY024



BRDYTB-ZY025



BRDYTB-ZY026



BRDYTB-ZY027

宝润达保温装饰一体板  
实际成品效果

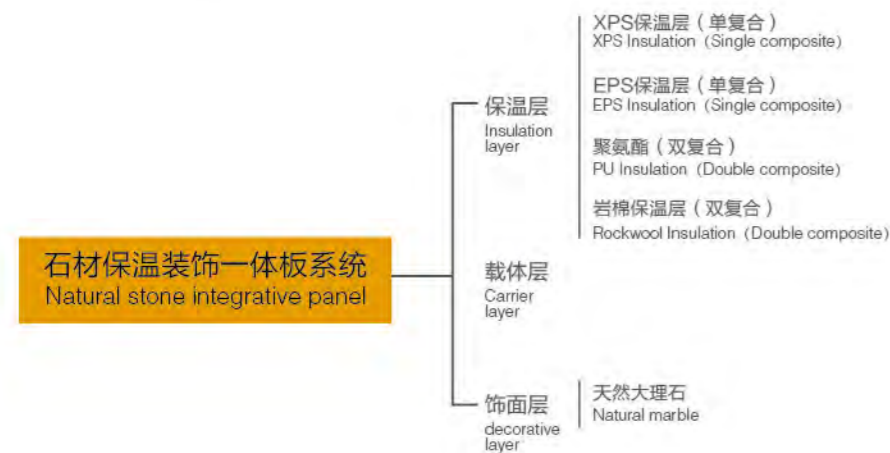


# NATURAL STONE IMITATIVE STONE INTEGRATIVE PANEL SYSTEM

## 二、石材保温装饰一体板系统

宝润达作为建筑外立面仿石系统领先的供应商，不仅拥有行业最先进制造工艺，更拥有很多的成功案例，同样的仿石材饰面一体板；选择宝润达，您将获得最成熟、最具性价比的系统化解决方案。

BRD as the leading supplier of exterior wall imitation stone system not only have the most advanced technology, but also have a lot of successful projects. BRD will provide you the most mature and high cost performance systematic solutions comparing with other suppliers.



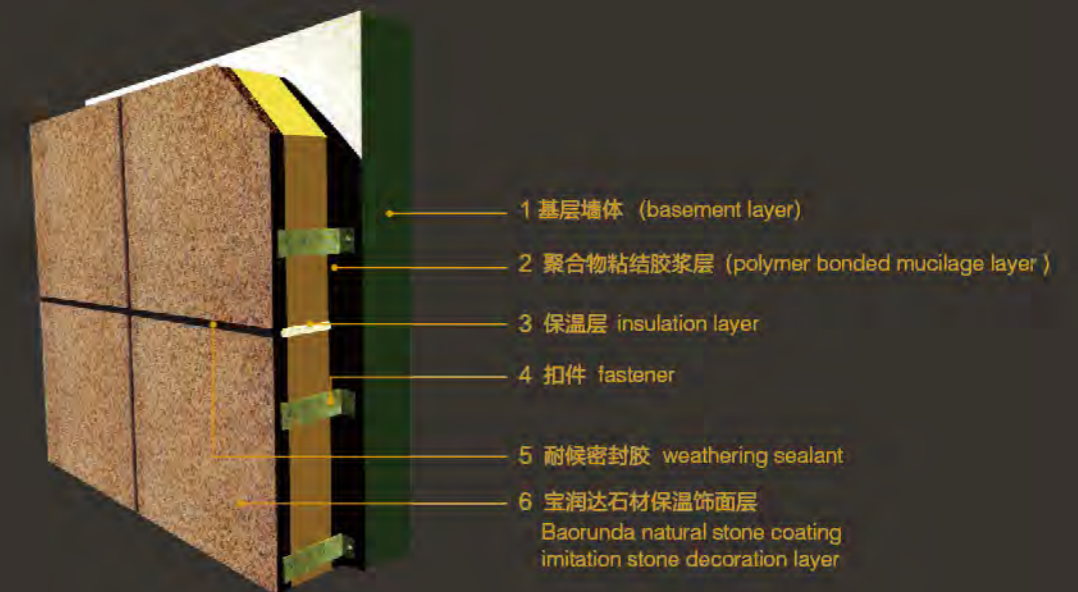
序号 Number	保温板材料名称 Insulation	外观色泽 External color	表观密度 (kg/m³) Appearance density (kg/m³)	压缩强度 (Mpa) compressive strength (Mpa)	尺寸稳定性 dimensional stability	导热系数 w/(m·k) Thermal conductivity w/(m·k)	燃烧性能 Flammability	水蒸气透过系数 (ng/pa·m·s) Water vapor permeability (ng/pa·m·s)
1	挤塑板 XPS	浅蓝色 light blue	28.0-35.0	≥0.200	≤1.20	≤0.03	B1级	≤3.0
2	真金板 TPX	白色 white	22.0-25.0	≥0.120	≤0.30	≤0.039	B1级	≤3.0
3	聚氨酯 PU	白色 white	30.0-32.0	≥0.170	≤0.30	≤0.036	B1级	≤3.0
4	岩 棉 Rockwool	暗黄色 Dark yellow	≥120	≥0.150		≤0.048	AA级	≤3.0

- 针对石材一体板系统，宝润达可以提供经济、中档、高档的解决方案。
- 宝润达只根据项目具体情况及您的需求，只向您提供最对、最合适的产品方案，而非最低价或最贵。
- 具体产品组成原材料的规格及参数，会在整体性方案里详细体现
- Imitation stone integrative panel system, BRD can provide economic, mid-range, high-end solutions
- BRD only provide you the optimum project, not the most cheapest and expensive project according to exact conditions and requirements.
- The raw materials specifications and Parameters will be embodied in the integrative solution.

# NATURAL STONE IMITATIVE STONE INTEGRATIVE PANEL SYSTEM

## (一)、石材保温装饰一体板系统

- 系统组成：天然大理石+保温芯材层
- System composition: Natural marble + Insulation layer
- 饰面层：天然薄石材
- Decorative layer: Natural thin stone
- 保温芯材层：岩棉、聚氨酯，EPX、XPS
- Insulation layer: Rockwool, PU, EPS, EPS





## CHARACTERISTICS OF NATURAL STONE INSULATION AND DECORATIVE INTEGRATIVE PANEL

### 石材保温装饰一体板系统特点

#### 1、装饰性强

保温装饰一体板饰面层主要为天然超薄花岗岩，装饰效果同石材干挂相同，且与建筑使用寿命相同，充分满足高档外观装饰要求。

#### 2、安全性高

宝润达一体板从材料安全、结构安全、防火安全、锚固安全四个方面全方位打造安全保障措施，消除建筑安全隐患。

温装饰一体板的标准重量可以根据客户选择的不同保温材料将单位重量28~36公斤，符合国家推广的轻质建材的要求。宝润达一体板从材料安全、结构安全、防火安全、锚固安全四个方面全方位打造安全保障措施，消除建筑安全隐患。

#### 3、自洁性好

经过精加工的天然石材，表面不易集聚灰尘，防污性能好，可清洗，极佳的自洁性，能长久的保持建筑的外饰面效果，保证建筑的品质。

#### 4、使用寿命长

优质的原材料，科学的生产工艺，确保产品拥有25年以上装饰寿命。

#### 5、保温隔热性好

宝润达一体板具有卓越的保温隔热性能，导热系数低而稳定，不受温度湿度的影响而变化，使整个建筑物拥有恒温效果。

#### 6、安装便捷

与传统幕墙铝板、幕墙相比，宝润达一体板自重轻，安装简单便捷。

#### 1、VARIOUS DECORATION

The decorative layer of integrative panel is natural thin granite. It have the same decorative effort as stone, and has the same service life as the buildings. It will fully satisfy the requirements of high grade decorative appearance.

#### 2、MULTIPLE SAFETY

Safe materials, safe structure, fireproof, safe fastener. Eliminating potential risks.

The weight of integrative panel is customized. Customers can choose different insulation materials and the weight is from 28-36 Kg. It meets the national standard of light construction requirements. We are focusing on safe materials, safe structure, fireproof, safe fastener to eliminate potential risks.

#### 3、SELF-CLEANING

Strong chemical resistance, excellent self-cleaning. Won't affect the surface after a long period. Excellent antibacterial properties and it suitable for clean room.

#### 4、LONG SERVICE LIFE

Premium raw materials, Scientific production technology, and it has the same service life as the buildings.

#### 5、EXCELLENT HEAT INSULATION

BRD integrative panel has excellent heat insulation property, low and durable thermal conductivity. It not be influenced by temperature and humidity. It can keep the building in a constant temperature.

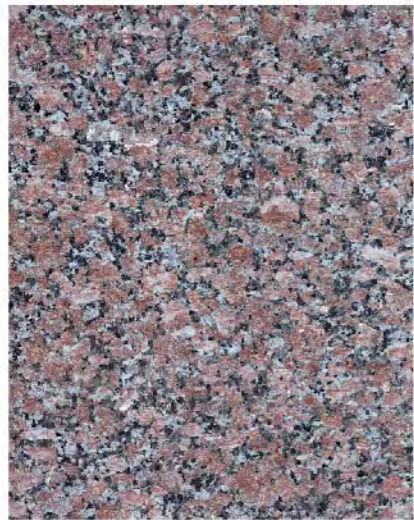
#### 6、EASY INSTALLATION

It is lighter and easy installation compared with traditional aluminum plate.

## SPECIFICATION

### 技术参数

检验项目 Inspection Item		指标
		II型（超薄石材饰面、陶瓷薄板3饰面） II model (thin stone facing、Ceramic plate 3 facings)
检验项目单位面积质量 kg/m <sup>2</sup> Quality per sq.M kg/m <sup>2</sup>		20-40
拉伸粘接强度 (Mpa) Tensile bond strength (Mpa)	原强度 Original strength	≥0.15, 破坏发生在保温材料中
	耐水 Water resistant	≥0.15
	耐冻融 Freeze-thaw resistance	≥0.15
抗冲击性 (J) Impact resilience (J)		用于建筑物10层10J冲击合格, 其他层3J冲击合格 10floors' building 10J qualified impact, other floor 3J qualified impact
抗弯荷载 (N) Bending loads (N)		不小于板材自重 Less than the weight of panel
吸水量 (g/m <sup>2</sup> ) Water Absorption (g/m <sup>2</sup> )		≤500
不透水性 Watertightness		没有渗透
燃烧性能 Flammability		B1级
XPS保温材料导热系数【W/(m.k)】 XPS Insulation panel thermal conductivity W/(m.k)		≤0.030



BRDYTB-SC001



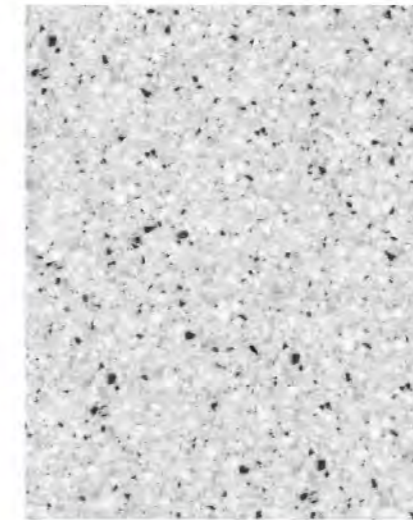
BRDYTB-SC002



BRDYTB-SC003



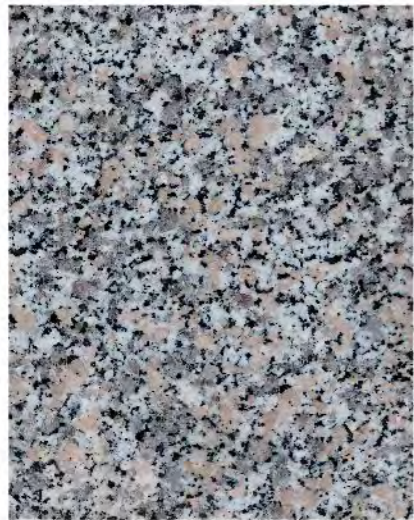
BRDYTB-SC010



BRDYTB-SC011



BRDYTB-SC012



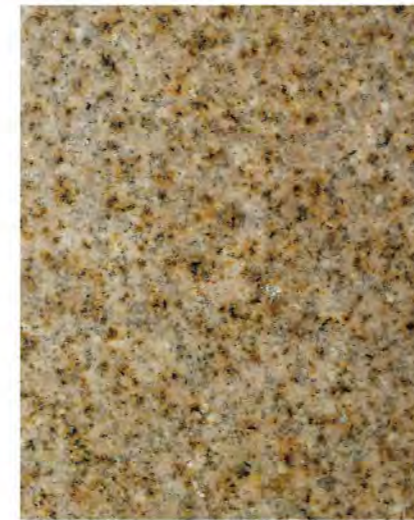
BRDYTB-SC004



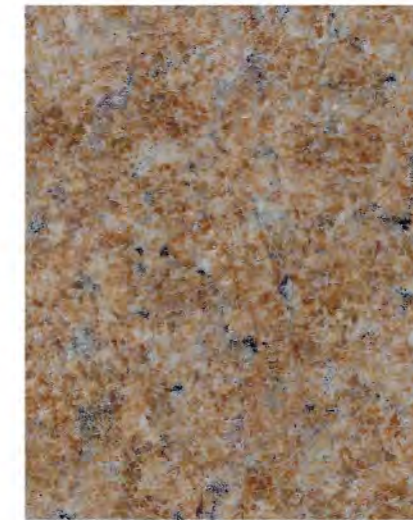
BRDYTB-SC005



BRDYTB-SC006



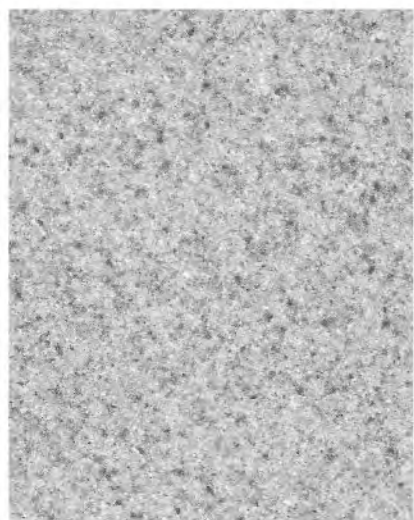
BRDYTB-SC013



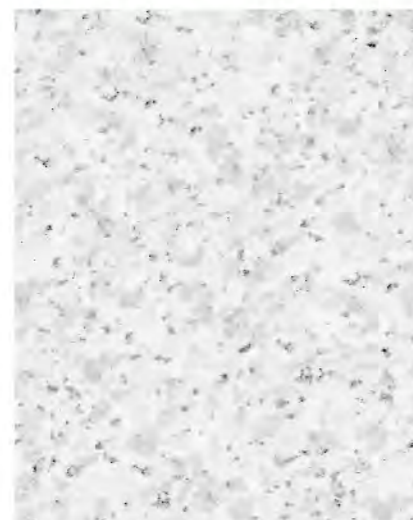
BRDYTB-SC014



BRDYTB-SC015



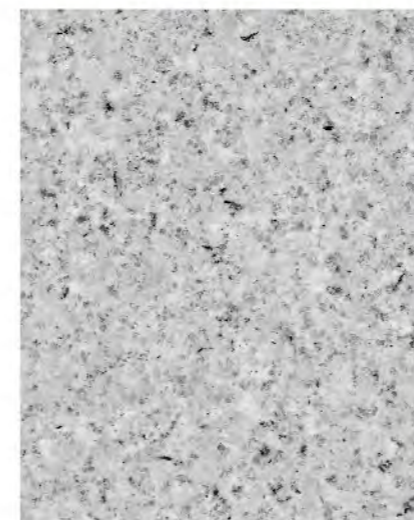
BRDYTB-SC007



BRDYTB-SC008



BRDYTB-SC009



BRDYTB-SC016



BRDYTB-SC017



BRDYTB-SC018

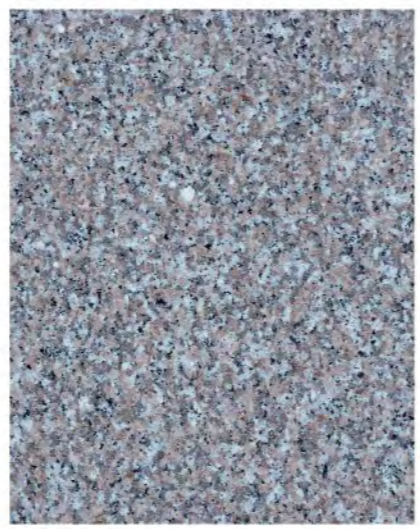
宝润达保温装饰一体板  
实际成品效果



BRDYTB-SC019



BRDYTB-SC020



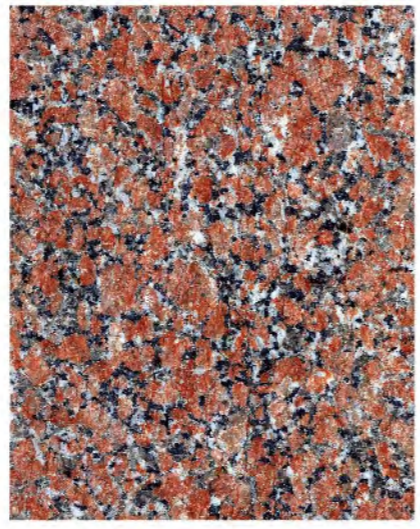
BRDYTB-SC021



BRDYTB-SC022



BRDYTB-SC023



BRDYTB-SC024



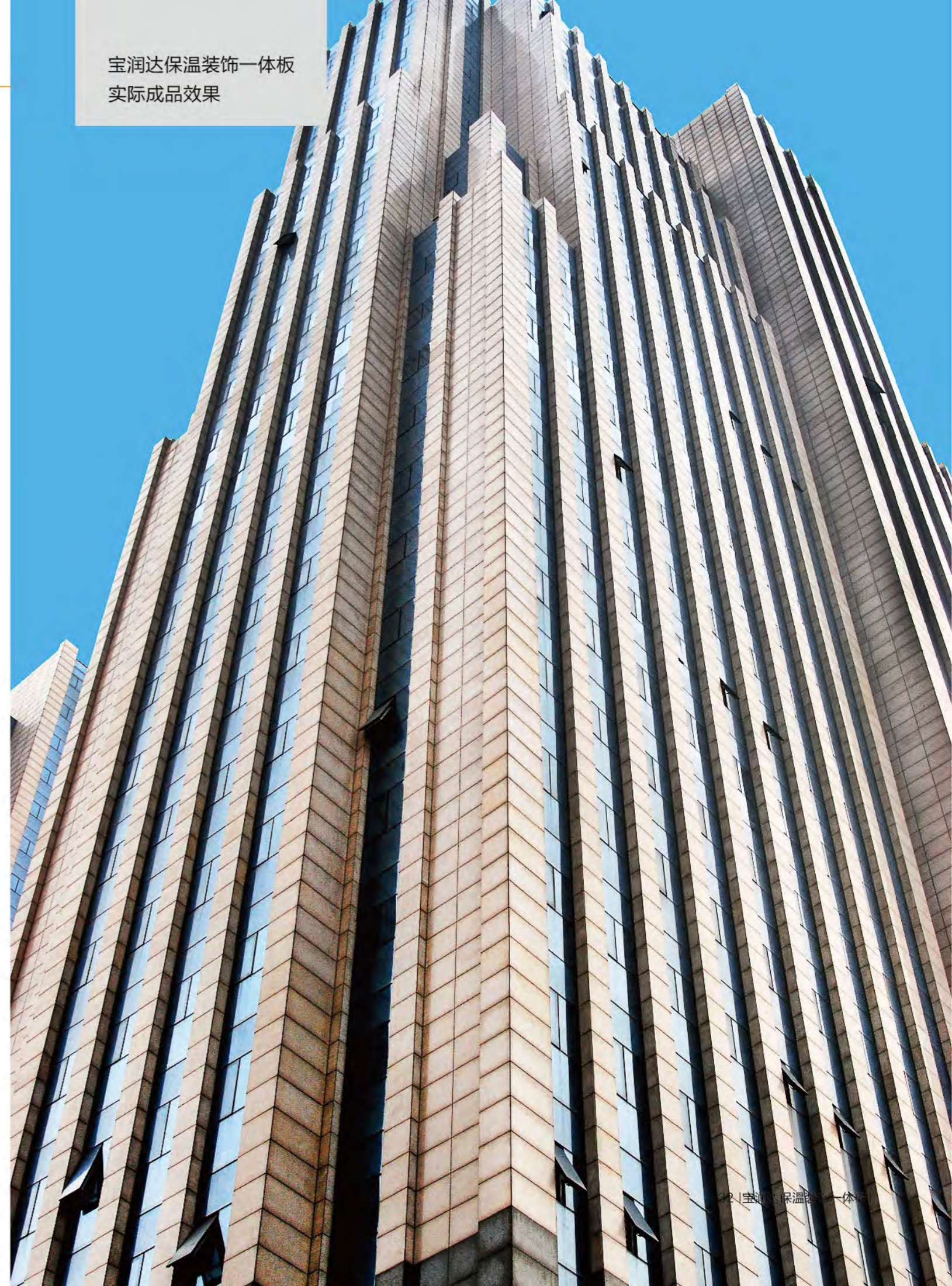
BRDYTB-SC025



BRDYTB-SC026



BRDYTB-SC027

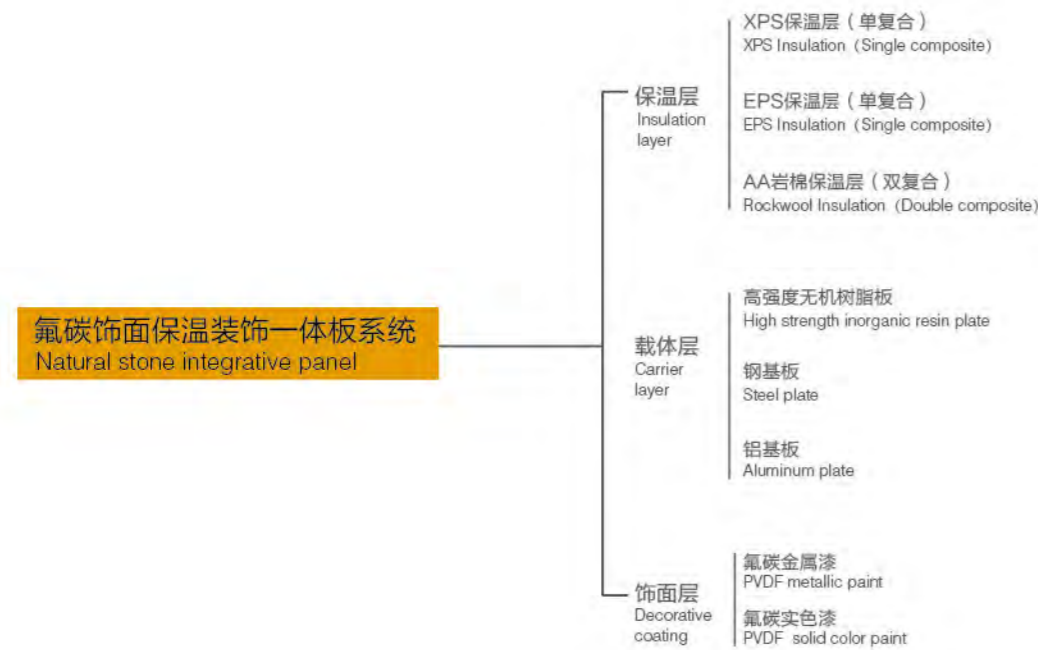


# FLUOROCARBON INSULATION DECORATIVE PANEL SYSTEM

## 三、氟碳饰面保温装饰一体板系统

宝润达氟碳饰面一体板整个产品配套体系非常成熟与稳定、不会出现饰面开裂，并有大量真实案例证明。

BRD as the leading supplier of exterior wall imitation stone system not only have the most advanced technology, but also have a lot of successful projects. BRD will provide you the most mature and high cost performance systematic solutions comparing with other suppliers.



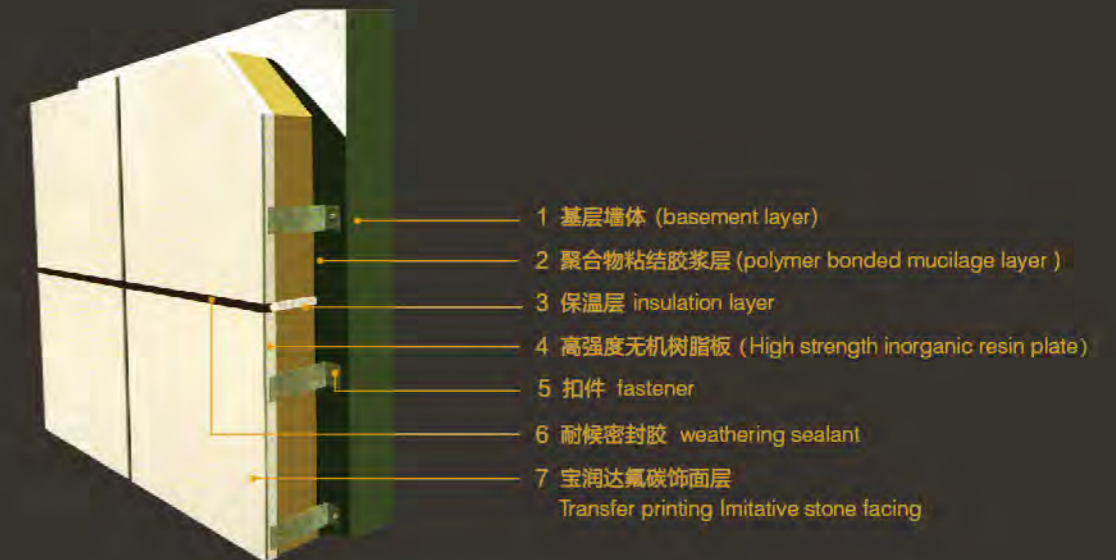
序号 Number	保温板材料名称 Insulation	外观色泽 External color	表观密度 (kg/m³) Appearance density (kg/m³)	压缩强度 (Mpa) compressive strength (Mpa)	尺寸稳定性 dimensional stability	导热系数 w/(m.k) Thermal conductivity w/(m.k)	燃烧性能 Flammability	水蒸气透过系数 (ng/pa.m.s) Water vapor permeability (ng/pa.m.s)
1	挤塑板 XPS	浅蓝色 light blue	28.0-35.0	≥0.200		≤0.03	B1级	≤3.0
2	聚氨酯 PU	白色、无渣质 white	22.0-25.0	≥0.120		≤0.039	B1级	≤3.0
3	岩 棉 Rockwool	浅黄色 light yellow	≥120	≥0.150		≤0.048	A级	

- 针对氟碳饰面装饰一体板系统，宝润达可以提供经济、中档、高档的解决方案。
- 宝润达只根据项目具体情况及您的需求，只向您提供最对、最合适的产品方案，而非最低价或最贵。
- 具体产品组成原材料的规格及参数，会在整体性方案里详细体现
- Imitation Natural stone integrative pane , BRD can provide economic, mid-range, high-end solutions
- BRD only provide you the optimum project, not the most cheapest and expensive project according to exact conditions and requirements.
- The raw materials specifications and Parameters will be embodied in the integrative solution.

# FLUOROCARBON INSULATION DECORATIVE PANEL SYSTEM

## (一)、氟碳饰面保温装饰一体板系统

- 系统组成：饰面层+面板骨架层+保温芯材层
- 饰面层：氟碳饰面（氟碳金属漆、氟碳实色漆）
- 面板骨架层高强度无机树脂板（也可采用铝基板、钢基板）
- 保温芯材层：岩棉、聚氨酯，EPX、XPS
- System composition: surface layer frame + panel casing layer+insulating material
- Surface layer frame:Fluorocarbon layer(Fluorocarbon metallic paint, Fluorocarbon solid color paints )
- Panel casing layer: treasure, high-strength inorganic resin plate
- Insulating material: rock wool, polyurethane, EPX, XPS)



## FLUOROCARBON INSULATION DECORATIVE PANEL FEATURES

### 氟碳饰面保温装饰一体板系统特点

#### 1、装饰性强

氟碳饰面保温装饰一体板抗紫外线性能特别强，能使建筑长期保持原有的光鲜色泽，持久亮丽如新。

#### 2、安全性高

宝润达一体板从材料安全、结构安全、防火安全、锚固安全四个方面全方位打造安全保障措施，消除建筑安全隐患。

#### 3、自洁性好

涂层防污性能好，灰尘污物难以附着，可清洗，自洁性好不会影响装饰效果。

#### 4、使用寿命长

优质的原材料，科学的生产工艺，确保产品拥有25年以上装饰寿命。

#### 5、性价比强

氟碳饰面，色泽靓丽，能提升楼盘品味，但价格远低于石材幕墙的价格，性价比非常高。

#### 6、保温隔热性好

宝润达一体板具有卓越的保温隔热性能，导热系数低而稳定，不受温度湿度影响而变化，使整个建筑物拥有恒温效果。

#### 7、安装便捷

与传统幕墙铝板、幕墙相比，宝润达一体板自重轻，安装简单便捷。

#### 1、STRONG DECORATION EFFECT

Fluorocarbon facing particularly strong ultraviolet resistance, heat preservation to decorate a whole board can keep building long-term original bright colour and lustre, lasting bright as new.

#### 2、HIGH SAFETY

Treasure, one plate from material safety, structural safety, fire safety, anchoring safety four aspects makes security measures, eliminate construction safety hidden trouble.

#### 3、GOOD SELF-CLEANING

Antifouling coating performance is good, the dust dirt adhesion, can be clean, good self-cleaning will not affect adornment effect.

#### 4、LONG SERVICE LIFE

High quality raw materials, scientific production technology, to ensure that products with more than 25 years of life.

#### 5、STRONG PERFORMANCE

Fluorocarbon finish, colour and lustre is beautiful beautiful, can promote building dish taste, but the price is much lower than the price of stone curtain wall, the price is very high.

#### 6、GOOD INSULATION

Company's board has excellent thermal insulation properties of an organic whole, low thermal conductivity and stability, not affected by temperature humidity and change, make the whole building with constant temperature effect.

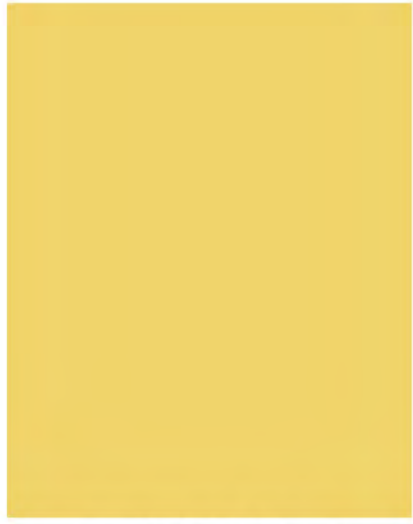
#### 7、INSTALLATION IS CONVENIENT

Compared with the traditional curtain wall aluminum plate, curtain wall, treasure, a whole plate light weight, simple and convenient installation.

## SPECIFICATION

### 技术参数

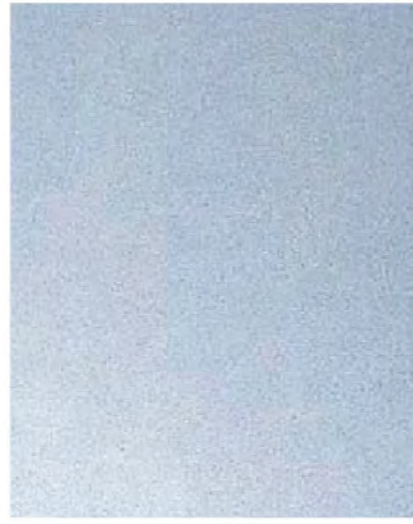
检验项目 Inspection Item	实测值 Measured value
检验项目单位面积质量, kg/m <sup>2</sup> Quality per sq.M, kg/㎡	< 20
颜色及外观 Color and appearance	颜色均匀一致, 符合标准要求, 外观整齐、平直、无污染、无破损 Uniform color, conforming the standard, net appearance, flat, pollution free, no damage.
抗冲击性 Impact resilience	10J冲击合格 10J Qualifying impact
耐冻融性 Freeze-thaw resistance	表面无裂纹、空鼓、起泡、剥离现象 No flaw, hollow, bubble, and exfoliation phenomenon
不透水性 Watertightness	试样防护层内测无水渗透 No water seepage
吸水量, g/m <sup>2</sup> Water Absorption, g/㎡	100
燃烧性能 Flammability	燃烧性能B1级(芯材)、A级(复合) B1Grade (core material)、A级 (composite)
XPS保温板导热系数W/(m.k) XPS Insulation panel thermal conductivity W/(m.k)	≤0.030
抗拉强度 Tensile strength	原强度, MPa, 0.032 浸水后, MPa, 0.27 冻融后, MPa, 0.26 热老化后, MPa, 0.31 Original strength, MPa, 0.032 After water immersion, MPa, 0.27 After freeze thawing, MPa, 0.26 After thermo senescence, MPa, 0.31
系统耐候性(80次“高温淋水”循环和20次“加热-冷冻”循环) System weatherability (80times of circulating high temperature water drenching and 20 times of circulating heating and freezing)	耐候性实验后, 饰面层未发现裂纹、空鼓、起泡、粉化、剥落等破坏; 耐候性试验后, 饰面层与保温层的拉伸粘结强度为0.26MPa, 饰面抗冲击性为10J级。 Weatherability, act the role ofing not found on the surface crack, empty drum, foaming, pulverization, peeling, broken; After weathering test, act the role of surface bonding strength and thermal insulation layer is 0.26 MPa, facing impact resistance level for 10 j.



BRDYTB-F001



BRDYTB-F002



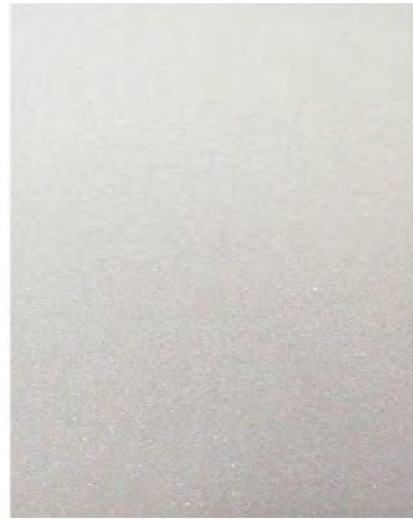
BRDYTB-F003



BRDYTB-F004



BRDYTB-F005



BRDYTB-F006



BRDYTB-F007



BRDYTB-F008



BRDYTB-F009





## 顶尖水准De设计

作为外墙装饰领域领先的系统供应商、宝润达拥有行业最强大的设计力量、从色彩搭配、分格、到原设计深化，样样精通，根据建筑物的属性，提供最顶尖的设计方案，超接地气！

### Top Level Design

As a exterior wall decoration systemic supplier, BRD has the most powerful design team. From the color, grid and deepening the original design, we can provide the top level design according to the properties of building. It is very popular.



# 宝润达设计鉴赏

20141125-01设计作品

宝润达保温装饰一体板





# 宝润达设计鉴赏

20150725-02设计作品

宝润达保温装饰一体板



宝润达设计鉴赏

20150528-03设计作品

宝润达保温装饰一体板



# 宝润达设计鉴赏

20150810-04设计作品  
宝润达保温装饰一体板



# 宝润达设计鉴赏

20140510-05设计作品  
宝润达保温装饰一体板



宝润达设计鉴赏

20150508-06设计作品

宝润达保温装饰一体板





## 品牌化De施工

宝润达施工服务的优势，不仅仅在于做为外立面仿石系统领先的供应商，拥有行业最新进制造工艺，更拥有很多的成功案例，同样的仿石材一体板，选择宝润达您将获得最成熟、最具性价比的系统化解决方案。

### Branding construction

The advantages of BRD construction services are not only that we have accumulated 21 years of engineering experience and has established a high standard construction team, but also we always do project in accordance with the agreement programs with our customers to carry out perfectly and never cut any corners. Because BRD is enterprice to create his brand by relying on the construction.

## BRD INTEGRATIVE INSULATION DECORATIVE PANEL CONSTRUCTION PROCESS

### 宝润达保温装饰一体板施工流程

#### 第一阶段 THE FIRST STAGE

##### 1、现场勘查

查看工程项目概况，施工难度，查看水通、电通、路通及物料运输等情况，并落实。

##### 2、前期准备

测量基面——设计分格——排序编号——出样整体立面布局深化图

##### 3、技术交底

与甲方、监理单位、设计单位共同协商确定外墙施工设计方案，如外墙分格方案、颜色等，并交底给施工工人。

#### 第二阶段 SECOND STAGE

##### 1、吊线

底层抹灰前，先吊线，后冲筋，做灰饼——土建单位施工。

##### 2、弹分格线

底层抹灰后，进行分格弹线，按照甲方、监理签字确认好的分格方案进行弹线分格，预留分格缝。

#### 第三阶段 THIRD STAGE

##### 1、后置承重支架定位打孔

用冲击钻在板块下方，分格缝以上部位，钻深度为50mm的孔。

##### 2、安装后置承重支架

用膨胀螺栓将承重固定件固定在墙面上。

##### 3、周边固定件定位打孔

用冲击钻在板块的四周打孔。

##### 4、嵌入膨胀螺栓

##### 5、强力胶粘剂批刮节能板面

采用点框法用批刀将专用粘剂批刮在节能板四周。板中间以点式批刮，批刮率为板面的50%以上。

##### 1.SCENE INVESTIGATION

View project overview, construction difficulty, view water and electric power supplies, roads, and material handling , etc., and then implement.

##### 2. PREPARATION

Measurement of the base surface--Design grid-- sort--- deepen overall facade layout

##### 3. TECHNICAL CLARIFICATION

With the First Party, supervisors, Designer jointly negotiated exterior wall construction design, such as grid scheme facades, color, etc., and then turn over to construction workers.

##### 1.SUSPENSION WIRE

Before the plastering, first dropped, after punching, then do ash cake - Civil construction

##### 2.SPLIT LINE

After plastering, construct the grids in strict accordance with the project which was confirmed by proprietor supervisor and reserve the the grid seams.

##### 1. REAR BEARING BRACKET POSITIONING DRILLING

To drill 50mm hole at the bottom plate and joint of panels with percussion drill

##### 2. INSTALL EAR BEARING BRACKET

Fixing the bearing holder at the wall with expansion bolts.

##### 3.PERIMETER FASTENER POSITIONING DRILLING

Drilling around the panels with percussion drill.

##### 4. EMBEDDING EXPANSION BOLTS

##### 5.STRONG ADHESIVE SCRAPING SURFACE OF ENERGY SAVING PANEL

Scraping the adhesives around the panels in point frame method with batch knife. Scrap the center of panel by point method, the scraping rate is more than 50% of the panel.

## BRD INTEGRATIVE INSULATION DECORATIVE PANEL CONSTRUCTION PROCESS

### 宝润达保温装饰一体板施工流程

#### 6、保温装饰一体试装

将保温装饰一体板放在专用水平承重支架上。

#### 7、初步固定

将保温装饰一体板放在专用水平承重支架上，初步固定。

#### 8、校准位置

确定垂直、水平两个方向的准确安装位置，并校正上下左右的预留线条，校正后进入下道工序施工。

#### 9、粘贴加固

保温装饰一体板平稳的固定后轻轻的固定在墙面上压实，使之耐贴贴实。严禁直接敲击板面，以免破坏涂层。

#### 10、安装周边固定件面

用机械连接固定件将板的四周连接紧固，保证安全可靠。

#### 11、专用胶粘贴保温压条

将保温压条嵌入分格缝内。

#### 12、打密封胶

打防水密封胶

#### 13、清洁现场

#### 第四阶段 竣工验收

##### FORTH STAGE: COMPLETION ACCEPTANCE

##### 1、检查：

严格按工程质量的要求检查。

##### 2、修缮：

对检查不合要求的进行修缮，力尽完美。

##### 3、揭保温装饰一体板保护膜：

揭保护膜后应及时将表面清理干净。

##### 4、验收：

按照现行国家标准进行施工质量验收。

#### 6. INSTALLATION OF INTEGRATIVE PANEL

Put the insulation and decorative panel on the professional horizontal bearing brackets.

#### 7. INITIAL FIXING

Put the insulation and decorative panel on the professional horizontal bearing brackets.

#### 8. POSITION CALIBRATION

Drilling around the panels with percussion drill.

#### 9. PASTE REINFORCEMENT

Fixing the panel on wall steadily and compact it gently. Don't hit the surface of panel in case of surface coating damage.

#### 10. INSTALL THE FASTENER

Fixing the each sides of panel with mechanical fastener to ensure it safe and durable.

#### 11 PROFESSIONAL GLUE STICK THE TRIM STRIP

embed the insulation strip into seam of grids.

#### 12 SEALING

Caulking waterproof sealant.

#### 13. CLEAN THE SIZE

##### 1.INSPECTION:

In strict accordance with the requirements of engineering quality

##### 2. MENDING:

Mending which is not qualified, and make it perfect.

##### 3. REMOVE THE PROTECTIVE FILM OF INSULATION AND DECORATIVE PANEL:

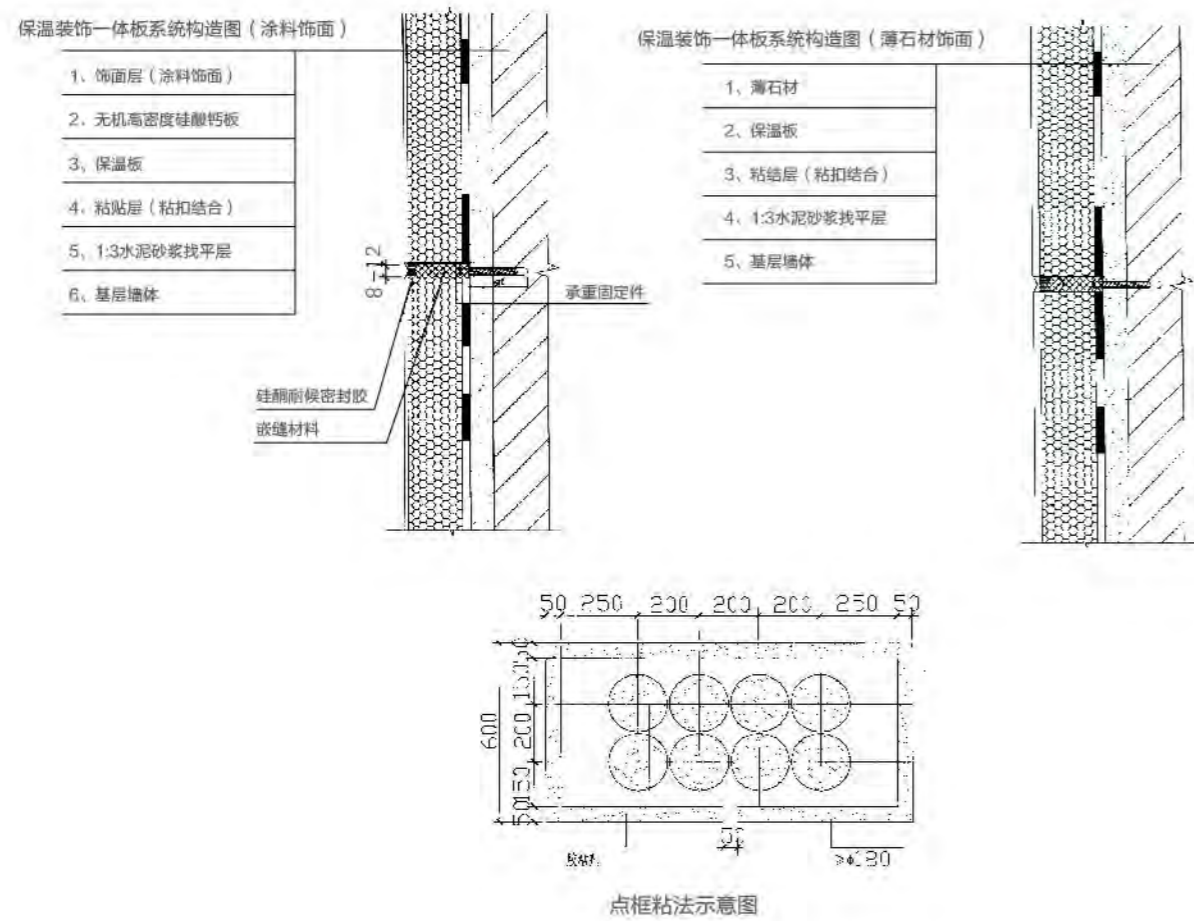
Clean the surface in time.

##### 4. INSPECTION AND ACCEPTANCE:

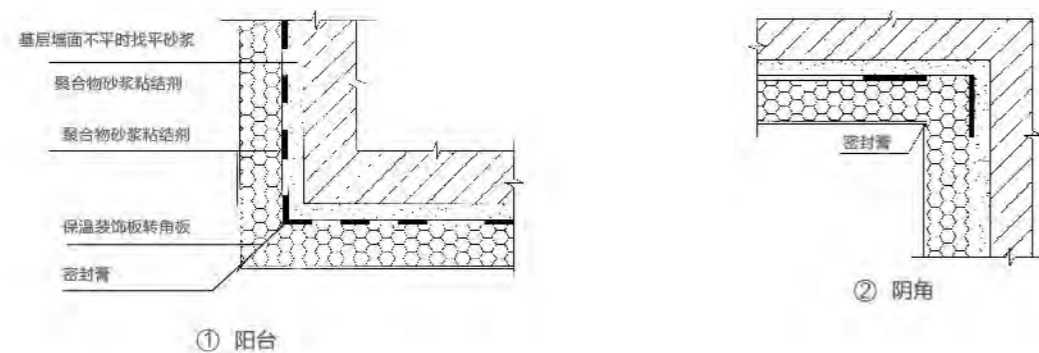
In accordance with existing national standards for construction quality acceptance.

## 宝润达保温装饰一体板系统及施工关键节点详细图解

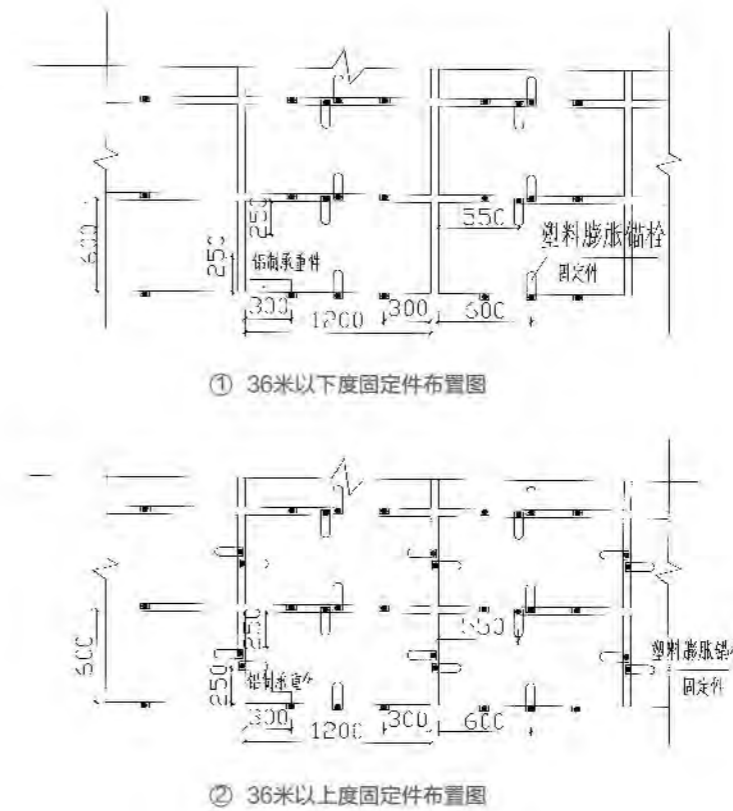
### (一)、宝润达保温装饰一体板系统构造图



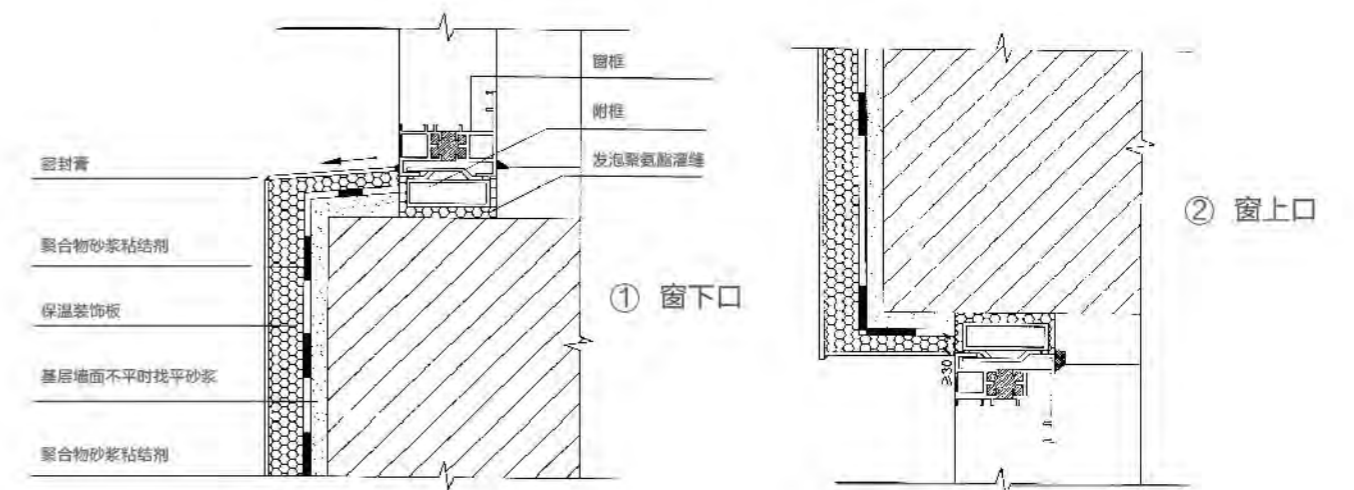
### (二)、外墙转角构造



### (三)、宝润达保温装饰一体板系统构造图



### (四)、窗口节点构造图







## 完美能落地 De 系统

大量的失败案例证明，外墙无论采用任何材料，要做出精品，必须对产品、设计、施工、做系统化考量！外墙装饰领域21年的工程实践、总结与创新，宝润达建立了一套非常严谨、能完全落地的系统。使我们真正具备了打造精品工程的实力与能力。

### Branding construction

The advantages of BRD construction services are not only that we have accumulated 21 years of engineering experience and has established a high standard construction team, but also we always do project in accordance with the agreement programs with our customers to carry out perfectly and never cut any corners. Because BRD is enterprice to create his brand by relying on the construction.

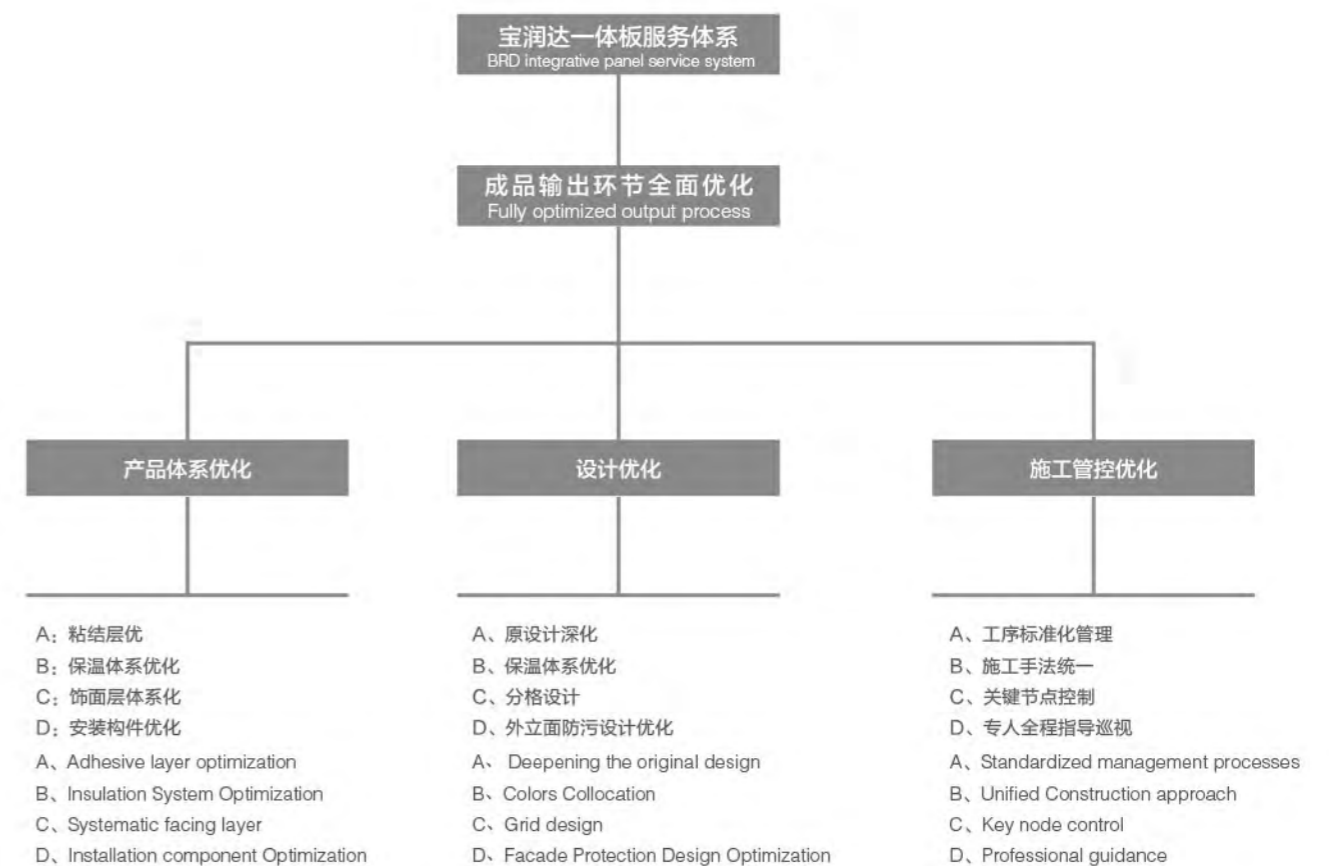


## BRD INTEGRATIVE PANEL SERVICE SYSTEM

### 宝润达一体板服务体系

我们拥有先进的服务体系，每一项服务都是实实在在的，从产品体系、设计优化、施工管理都能提供最完善的系统化服务。

We have advanced service system, each of the services are real. Product system, design optimization, construction management can provide the most comprehensive and systematic services.





## 宝润达领域De作品

宝润达作为建筑外饰面系统化解决方案的领先供应商，深知——外立面的品质直接决定建筑的档次。一直以来宝润达坚持走精品化路线，为客户提供高价值的产品，通过提升建筑的价值，来实现宝润达品牌的价值。

### BRD field works

BRD as the leading provider of exterior wall decoration systematic solutions. We know very well that ---- the facades quality directly determines the grade of the building. BRD has be







实际成品效果  
建业集团  
宝润达保温装饰一体板



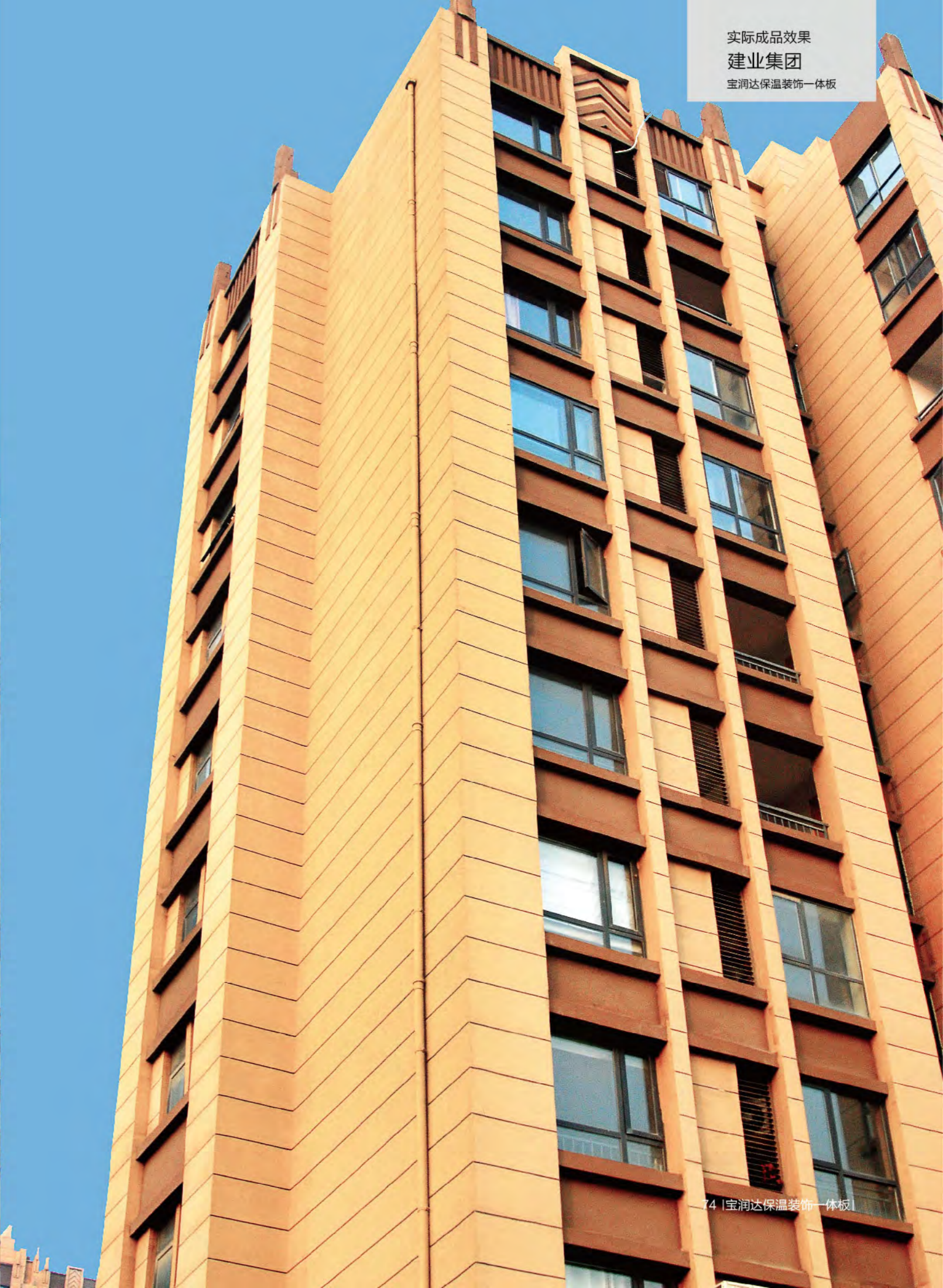
369 | 宝润达保温装饰一体板 |

实际成品效果  
农业综合服务大楼  
宝润达保温装饰一体板



70 | 宝润达保温装饰一体板 |











## 结语 Conclusion

我们的优势不仅仅只是建立在现代化的生产车间、先进的制造工艺、卓越的产品性能上。更重要的是我们拥有一支行业最高水准的设计、安装施工队伍，真正具备集产品、设计、施工为一体，打造精品工程的能力。只要您给宝润达参与的机会，我们就有十足的信心向您提供最佳的系统化解决方案。

Our advantages are not only modern workshop, advanced technology and excellent product, but also our highest level design, install team who have the abilities to integrate design and install into quality projects. if only you give us a chance, we have full confidence to provide you excellent systematic solutions.